

DELEBOK
STERN POWR

100

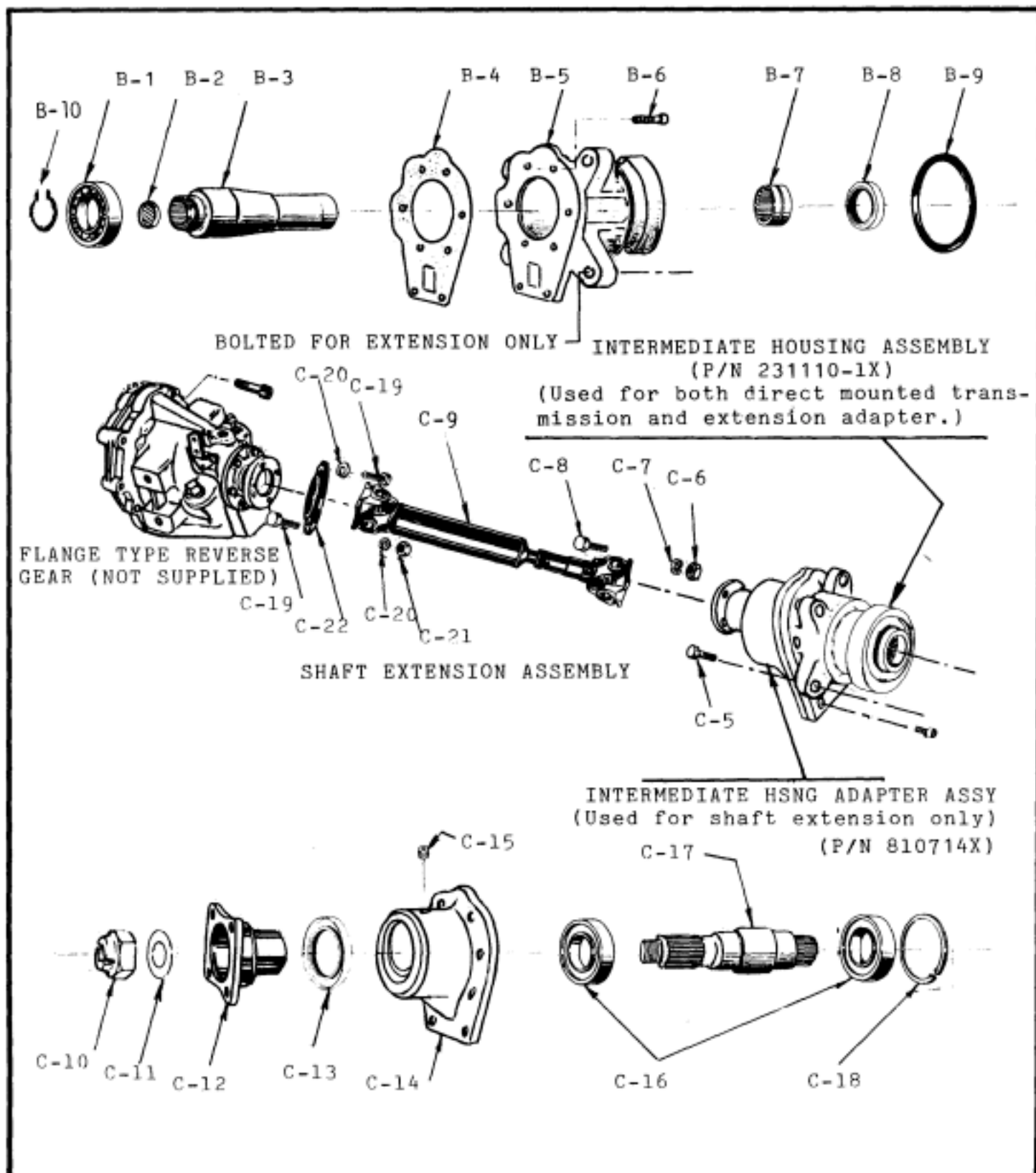


FIGURE VII-2 TRANSMISSION GROUP PARTS

B. TRANSMISSION GROUP

REF NO.	PART NAME	PART NO.	QTY	
			STD	SHFT EXT
See Fig. VII-1	HYD REV GEAR ASSY (71 size)	AS20-71	1	
	(72 size)	AS20-72	1	
	INTERMEDIATE HOUSING ASSY Includes Items B-1 thru B-10	231110-1X	1	1
B-1	BEARING, ball (rev gear part)	830725	1	1
B-2	PLUG SEAL	830780	1	1
B-3	SLEEVE	830722	1	1
B-4	GASKET	7-M-8	1	1
B-5	INTERMEDIATE HOUSING	830731	1	1
B-6	BOLT, 7/16-14 x 1 Soc Hd	830830	8	8
B-7	BEARING, roller	830726	1	1
B-8	SEAL, oil	830727	1	1
B-9	O-RING	830728	1	1
B-10	SNAP RING	830721	1	1
	SHAFT EXTENSION KIT Includes Items C-5 thru C-22	231110-2X		1
C-5	BOLT, 7/16-14 x 1½ hex	830838		4
C-6	NUT, 7/16-20 hex	830760		4
C-7	WASHER, 7/16 lock	830831 (500357-12)		4
C-8	BOLT, 7/16-20 x 1½ hex	830761		4
C-9	SHAFT EXT. ASSY	810713(L)X		1
	INTERM, HSG. ADAPTOR ASSY Includes Items C-10 thru C-18	810714X		1
C-10	NUT, 1-20 hex	830843		1
C-11	GASKET, oil seal	830762		1
C-12 *	FLANGE	830768		1
C-13 *	OIL SEAL	830769 (830727)		1
C-14	ADAPTOR	830766		1
C-15	PLUG, oil fill	830717		1
C-16	BEARING, ball	830770		2
C-17	SHAFT	830764		1
C-18	RING, retainer	830767		1
	ADAPTER PLATE KIT Includes Items C-19 thru C-22	810711X		1
C-19	BOLT, 7/16-20 x 1½ hex	830761		8
C-20	WASHER, 7/16 lock	830831 (500357-12)		8
C-21	NUT, 7/16-20 hex	830760		4
C-22	ADAPTER PLATE (5" for 72 size) (4" for 71 size)	830763 830763-1		1 1

*NOTE: Optional flange 830768-1 and mating 830727-1 seal are larger dia. form.

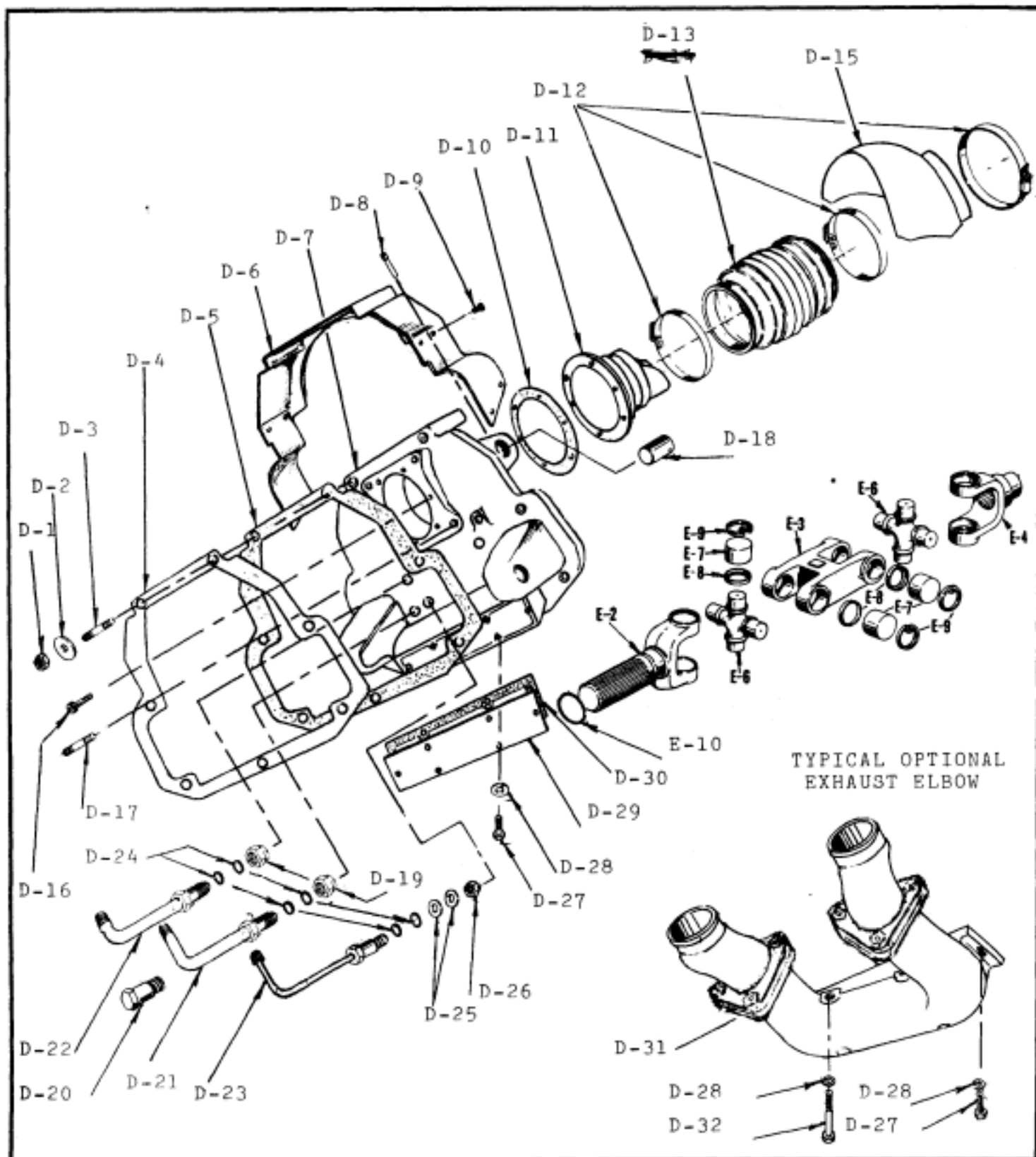


FIGURE VII-3 TRANSCOM HOUSING AND UNIVERSAL JOINT ASSEMBLIES

C. TRANSOM HOUSING ASSEMBLY

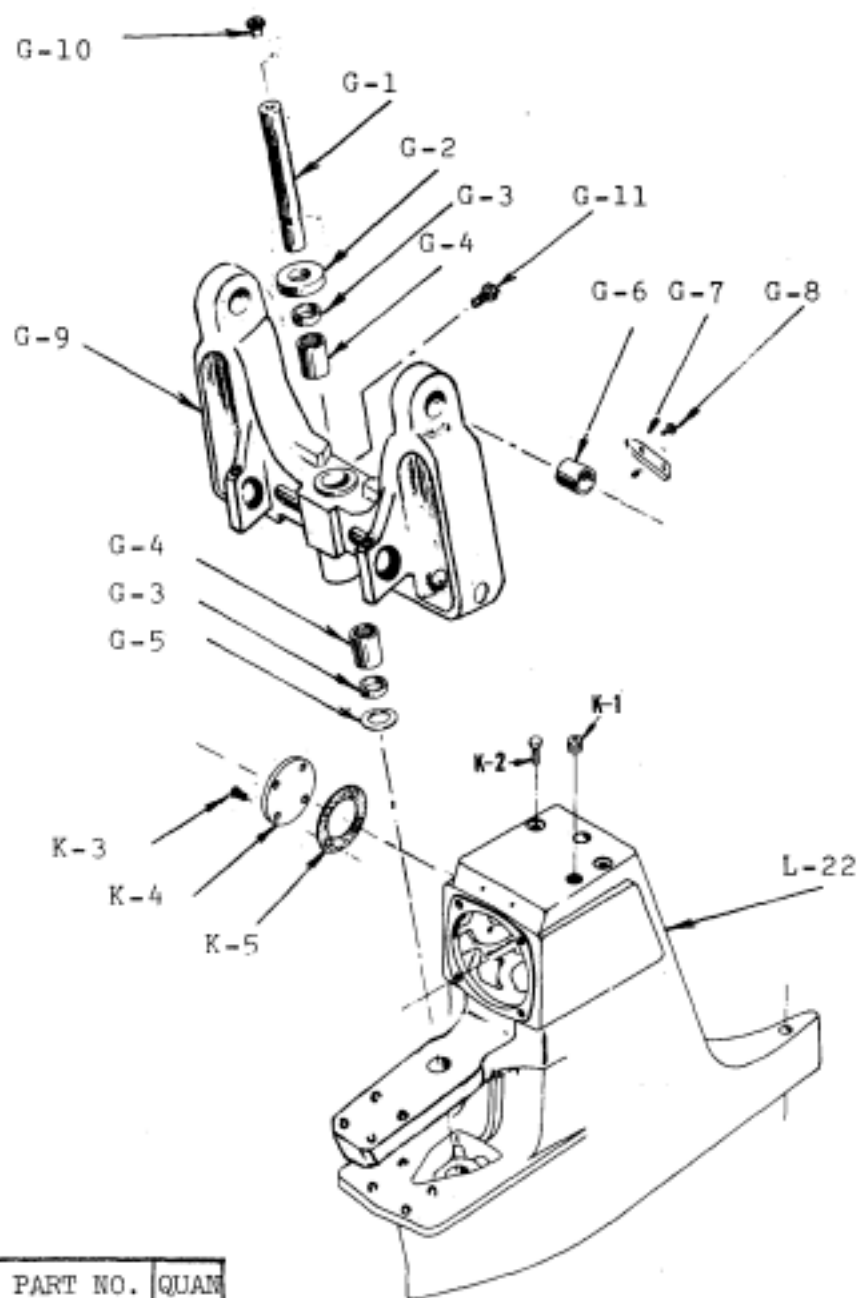
REF.	PART NAME	PART NO.	QTY
D-1	NUT, 1/2-13 hex	830081	7
D-2	WASHER, 1/2	830776	7
D-3	STUD, 1/2-13x4 1/2	830775	7
D-4	BACKING PLATE/TEMPLATE	830785	1
D-6*	GASKET	830738	1
D-7*	COVER	830724	1
D-7	TRANSOM HOUSING	830734	1
D-8	PIN, lock	11-M-12	2
	(Alternative) LOCKSCREW	830718	2
D-9	SCREW, 1/4-20x1/2	830832	8
D-10	GASKET, boot holder	830782	1
D-11	BOOT HOLDER	830733	1
D-12	CLAMP, boot	830407	3
D-13	BOOT, (N.S.S. with Wire)	19-M-9	1
D-14	WIRE, boot (N.S.S. with Boot)	13-M-11	1
D-15	BOOT SHROUD	830406	1
D-16	SCREW, soc hd 5/15-18x 1 1/4	830837	6
D-17	STUD, 7/16-14x1 1/2	830819	4
D-18*	PIN, transom hsg-yoke	11-M-3	2
D-19	NUT, jam S.S. 1/2-20	830787	4
D-20	STEERING PLUG(option)	830859	2
D-21	STEERING ADAPTOR	830807	2
D-22	LO PRESS. ADAPTOR	830806	2
D-23	HI PRESS ADAPTOR	830795	2
D-24	O-RING	830786	12
D-25	WASHER, S.S. 3/8	830865	4
D-26	NUT, 3/8-24 S.S. jam	830788	2
D-27	SCREW, 5/16-18x3/4 hex	830834	6
D-28	WASHER, 5/16 lock	830836	6
D-29	BLANK PLATE, exhaust	830860	1
D-30	GASKET, exhaust	830778	1
D-31	EXHAUST COLLECTOR (OPTIONAL 3 PART ASSY)	810703X	1
D-32	SCREW, 5/16-18x4 1/4	830835	4

D. CENTER YOKE JOINT ASSEMBLY

REF.	PART NAME	PART NO.	QTY
E-1	CENTER YOKE JOINT ASSEMBLY (Includes Items E-2 thru E-9 except E-4)	209404	1
E-2	SHAFT, yoke	2-82-871	1
E-3	YOKE, center	2-26-257	1
E-4	YOKE, end	2-4-3161	1
E-5	KIT, universal joint (Includes Items E-6 thru E-9)	5-153X	2
E-6	CROSS, journal (N.S.S.)	2-5-386X	2
E-7	BEARING ASSEMBLY (N.S.S.)	2-6-208X	8
E-8	GASKET (N.S.S.)	2-86-89	8
E-9	RING, snap (N.S.S.)	2-7-29	8
E-10	O-RING, universal joint seal	15-M-10	1

*MX models have half cover 830738-1, double eared housing 830724-1 and longer 11-M-3-2 pins.

NOTE: Certain drives may have no K-4 cap but dipstick for K-1.



REF	NAME	PART NO.	QUAN
K1	Plug, Fill	830086	1
K2	Plug, Thread	(OBSOLETE)	
K3	Screw, Cap	830022	4
K4	Cap, Solid	6-M-19	1
K5	Gasket, Cap	7-M-9	1

FIGURE VII-4 PIVOT SUPPORT YOKE ASSEMBLY

UPPER CASE ASSEMBLY

NOTE: Certain drives may have 2 piece shaft L-23 or L-26.

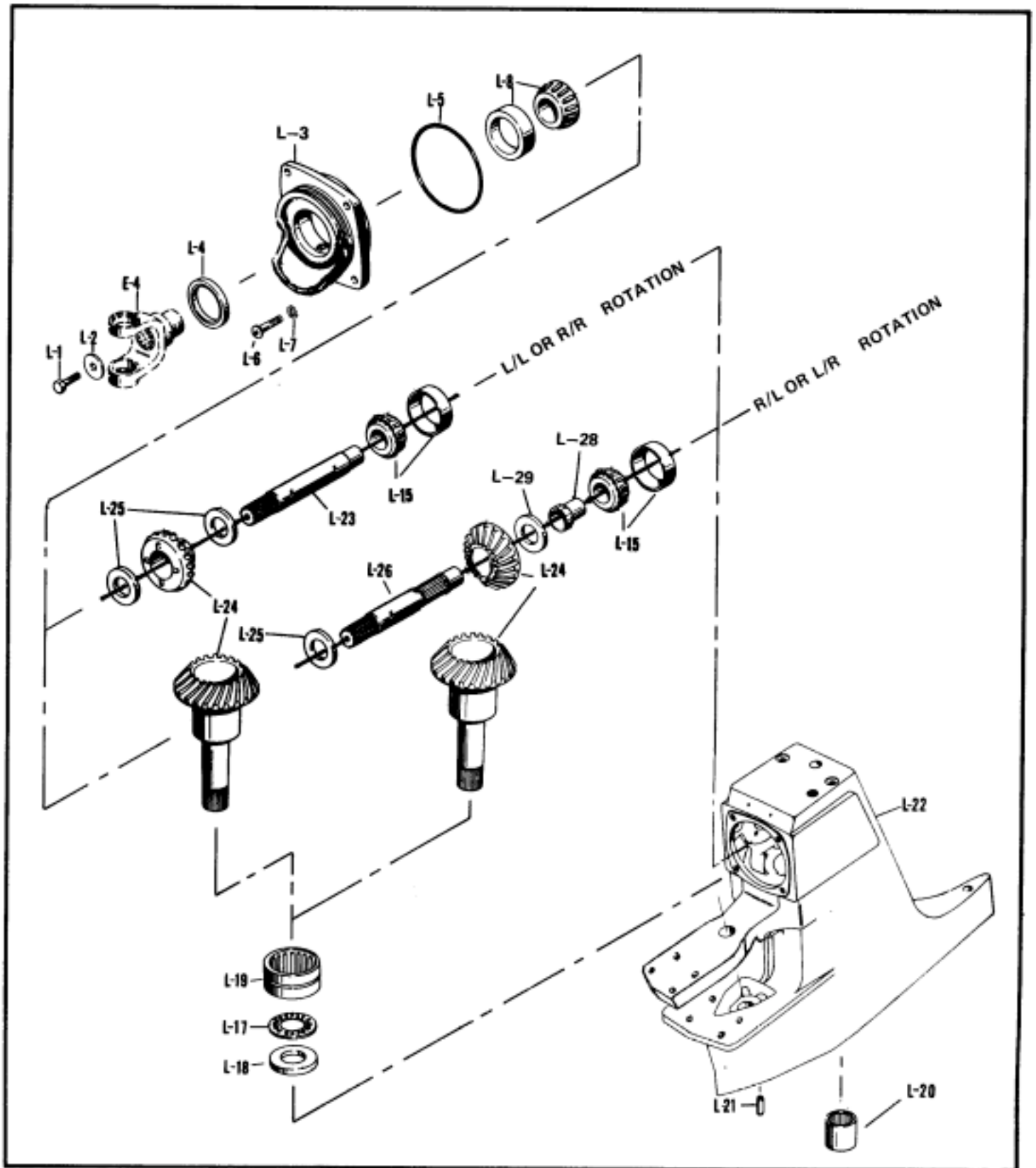


FIGURE VII-5 UPPER CASE ASSEMBLY (MODELS 101/103/105/107)

E. PIVOT SUPPORT YOKE ASSEMBLY

REF.	PART NAME	PART NO.	QTY
G-1	PIVOT PIN, yoke	830783	1
G-2	WASHER, pivot pin (upper)	830040	1
G-3	SEAL	15-M-2	2
G-4	BEARING, roller	550131	2
G-5	WASHER, pivot pin (lower)	830009	1
G-6	BUSHING	16-M-1	2
G-7	ANODE	830136	1
G-8	SCREW, anode	830139	2
G-9	YOKE	830730	1
G-10	PLUG, yoke pivot pin	(OBSOLETE)	
G-11	SCREW, grease	830474	1

F. UPPER CASE ASSEMBLY

(MODELS 101, 103, 105 AND 107)

REF.	PART NAME	PART NO.	QTY LL or RR	QTY LR or RL
L-1	SCREW, input shaft	500667-7	1	1
L-2	WASHER, input shaft screw	830049	1	1
L-3	BEARING CAP, input shaft front	21-M-17	1	1
L-4	SEAL, input shaft front oil	15-M-1	1	1
L-5	O-RING, bearing cap	15-M-4	1	1
L-6	SCREW, bearing cap	830343	4	4
L-7	WASHER, starlock	830144	4	4
L-8	BEARING ASSY, input shaft front consists of CONE and CUP	810037X 550456 550457	1 1 1	1 1 1
L-15	BEARING ASSY, input shaft rear consists of CONE and CUP	810038X 550653 550654	1 1 1	1 1 1
L-17	BEARING, upper stem gear thrust	550658	1	1
L-18	RACE, stem gear thrust bearing (See Table of Races and Spacers below.)	8-M-1-()	1	1
L-19	BEARING, upper stem gear roller (Lrg)	550656	1	1
L-20	BEARING, upper stem gear roller (Sml)	550657	1	1
L-21	PIN, dowel	500601-14	1	1
L-22	CASE, upper (Short) or CASE, upper (Long)	830735 830765	1 1	1 1
L-23	SHAFT, input	3-M-1	1	
L-24	GEAR SET, (See Table VI-1 Master Gearset Reference)			
L-25	SPACER, (See Table of Races and Spacers below.)	830085-()	2	1
L-26	SHAFT, input	3-M-3		1
L-28	BUSHING, input shaft	830399		1
L-29	SPACER, (See Table of races and Spacers below.)	830400-()		1

TABLE OF RACES AND SPACERS

L-18 or M-6		L-25		L-29	
PART NO.	THICKNESS INCHES	PART NO.	THICKNESS INCHES	PART NO.	THICKNESS INCHES
8-M-1-1	.238	830085-1	.094	830400-1	.149
8-M-1-2	.239	830085-2	.096	830400-2	.151
8-M-1-3	.240	830085-3	.098	830400-3	.153
8-M-1-4	.241	830085-4	.100	830400-4	.155
8-M-1-5	.242	830085-5	.102	830400-5	.157
8-M-1-6	.243	830085-6	.104	830400-6	.159
8-M-1-7	.244	830085-7	.106	830400-7	.161
8-M-1-8	.245	830085-8	.108	830400-8	.163
8-M-1-9	.246	830085-9	.110	830400-9	.165
8-M-1-10	.247	830085-10	.112	830400-10	.167
8-M-1-11	.248	830085-11	.114	830400-11	.169
8-M-1-12	.249	830085-12	.116	830400-12	.171
8-M-1-13	.250	830085-13	.118	830400-13	.173
8-M-1-14	.251	830085-14	.120	830400-14	.175
8-M-1-15	.252	830085-15	.122	830400-15	.177
8-M-1-16	.253	830085-16	.124	830400-16	.179
8-M-1-17	.254	830085-17	.126	830400-17	.181
8-M-1-18	.255				
8-M-1-19	.256				
8-M-1-20	.257				

G. LOWER CASE ASSEMBLY

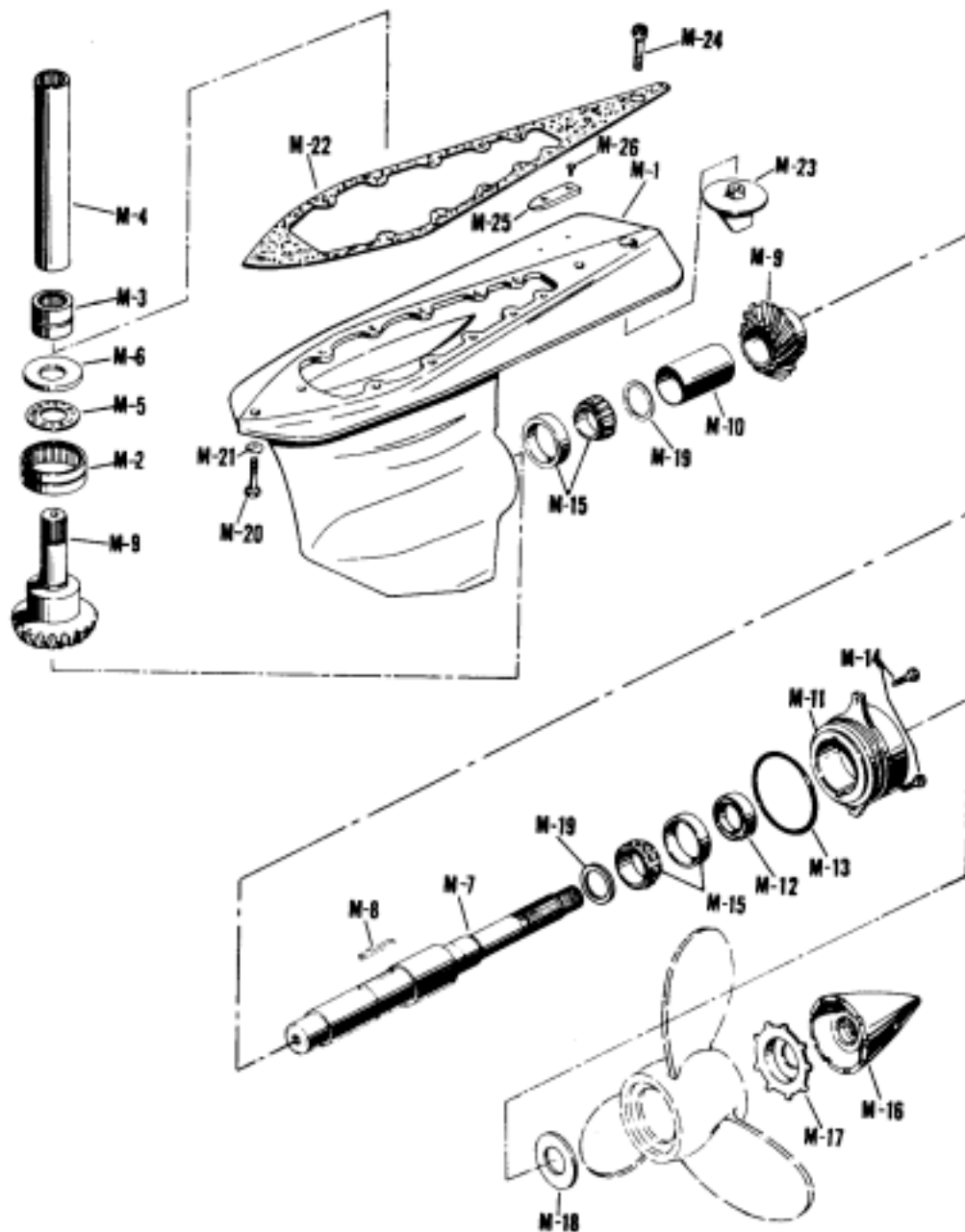
MODELS 101, 103, 105 AND 107

REF	PART NAME	PART NO.	QUANTITY				
			101	103	105	OLD 107	107
M-1*	CASE, lower	1-M-3	1				
	(Bore 4 7/16)	1-M-3-1		1			
	(Bore 4 5/16)	1-M-3-2			1		
		1-M-3-3				1	
		1-M-3-4					1
M-2	BEARING, stem gear roller (Lrg)	550656	1	1			
		830500			1	1	1
M-3	BEARING, stem gear roller (Sml)	550657	1	1	1	1	1
M-4	COUPLER	12-M-1-()	1	1	1	1	1
	(Refer to Section VI(C) Vertical Couplers and Extension Kits)						
M-5	BEARING, stem gear thrust	550658	1	1	1	1	1
M-6	RACE, stem gear thrust brg	8-M-1-()	2	2	2	1	1
	(See Table of Races and Spacers Above.)						
M-7	SHAFT, output	105-0	1	1	1		
		105-1			1		
		105-2			1		
		107				1	1
M-8	KEY, output shaft	9-M-4					
		9-M-4-1					
		9-M-4-2					
		9-M-4-3					
M-9*	GEAR ASSEMBLY, (See Section VI(A) Master Gearset Reference.)	830193	1	1	1	1	1

*NOTE: MX case with side fins 1-M-3-4MX. See Page 103 note for MX gears.

LOWER CASE ASSEMBLY

(See Pages 22 thru 24 for typical propeller forms.)



NOTE: Certain drives may have M-9 gears without spline stops which therefore use M-4 couplers with internal snap ring. These drives also have different cap M-11 and larger 7/16" studs M-14.

FIGURE VII-6 LOWER CASE ASSEMBLY (MODELS 101/103)

LOWER CASE ASSEMBLY

MODELS 105 AND 107

(See Pages 22 thru 24 for typical propeller forms.)

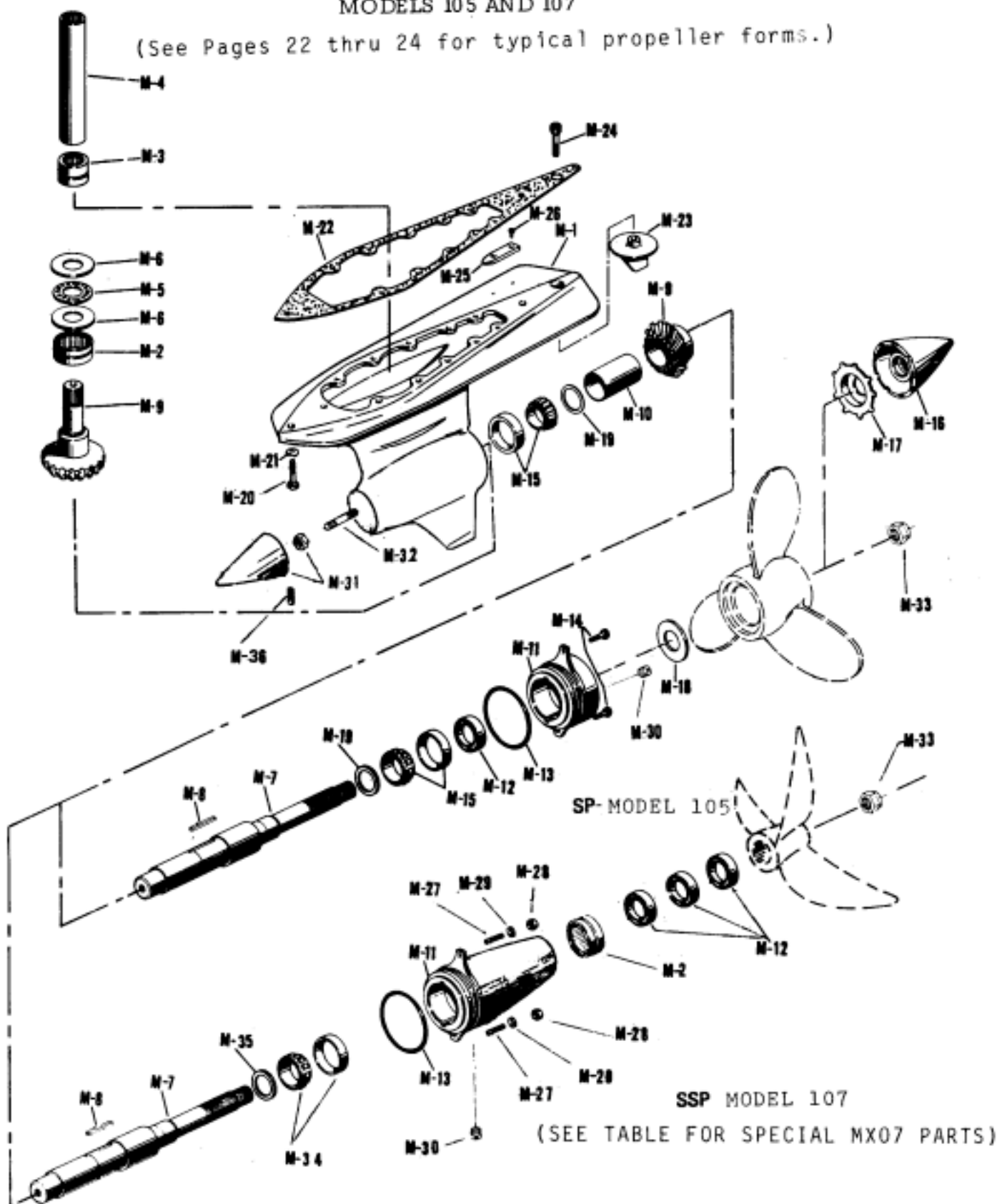


FIGURE VII-7 LOWER CASE ASSEMBLY (MODELS 105/107)

REF	PART NAME	PART NO.	101	103	105	OLD 107	107
M-10	SLEEVE, output shaft	830192	1	1	1	1	1
M-11*	CAP, output bearing	21-M-3	1	1			
		21-M-3SP			1		
		21-M-3-1				1	
		21-M-3-2					1
M-12	SEAL, output shaft oil	15-M-3	1	1	1		
		830503				3	3
M-13	O-RING, bearing cap	15-M-5	1	1	1	1	
		15-M-5-1					1
M-14	SCREW, bearing cap	830023	2	2	2		
M-15	BEARING ASSY, output shaft consists of CONE and CUP	810037X	2	2	2	1	1
		550456					
		550457					
M-16	CONE NUT, prop (Option)	830315	1	1	1		
M-17	LOCKWASHER, prop cone nut	830001	1	1	1		
M-18	HUB SUPPORT, prop 105-0	830004	1	1	1		
	105-1	830004-1			1		
M-19	SPACER, output shaft brg (See Table of Races and Spacers below.)	830084-()	1	1	2	2	2
M-20	SCREW, upper/lower case	830021	14	14	14	14	14
M-21	WASHER, upper/lower case	830020	14	14	14	14	14
M-22	GASKET, upper/lower case	7-M-2	1	1	1	1	1
M-23	TAB, trim	830134	1	1	1		
		830134-1				1	1
M-24	SCREW, tab trim (Short upper)	830070	1	1	1	1	
	(Long upper)	830070-6	1	1	1	1	
M-25	ANODE, cavitation plate	830136	1	1	1	1	1
M-26	SCREW, anode	830139	2	2	2	2	2
M-27	STUD, Bearing cap	830519					2
M-28	NUT, stud	830520					2
M-29	WASHER, stud	830521					2
M-30	OIL PLUG	830510				1	1
		830510-1			1		
M-31	NOSE CONE,(N.S.S. with NUT)	830497-2			1	1	1
	NUT(N.S.S. with NOSE CONE)	830508			1	1	1
M-32	STUD, nose cone	830507			1	1	1
M-33	NUT, propeller 105-0 type shaft (see pg. 31) 105-1 and -3	830498	1	1	1	1	1
	105-2	830505			1	1	1
		830506			1		
M-34	BEARING, cone	830502				1	1
	BEARING, cup	830501				1	1
M-35	SPACER, bearing (See Table of Races and Spacers below.)	830504-()				1	1
M-36	SET SCREW, nose cone	830517			1	1	1

*NOTE: MX models have 21-M-3-3MX type four bolt output caps

TABLE OF RACES AND SPACERS

M-19		M-35	
PART NO	THICKNESS INCHES	PART NO	THICKNESS INCHES
830084-1	.098	830504-1	.098
830084-2	.100	830504-2	.100
830084-3	.102	830504-3	.102
830084-4	.104	830504-4	.104
830084-5	.106	830504-5	.106
830084-6	.108	830504-6	.108
830084-7	.110	830504-7	.110
830084-8	.112	830504-8	.112
830084-9	.114	830504-9	.114
830084-10	.116	830504-10	.116
830084-11	.118	830504-11	.118
830084-12	.120	830504-12	.120
830084-13	.122	830504-13	.122
830084-14	.124	830504-14	.124
830084-15	.126	830504-15	.126
830084-16	.128	830504-16	.128

H. INTERNAL STEERING SYSTEM
FOR ALL MODELS

NOTE: Twin format shown is for PARALLEL connection with TIE BAR

REF.	PART NAME	PART NO.	Qty	
			Std	Twin
S-1	STEERING CYLINDER	830811-1	1	1
S-2	SHOE	830739	2	2
S-3	WASHER	830771	2	2
S-4	GUIDE BLOCK	830723	2	2
S-5	BOLT, soc hd 3/8-16x1 1/2	830840	4	4
	BOLT, soc hd 2/8-16x1	830070-5	4	4
S-6	ADAPTER	830794	2	2
S-7	CUP SCREW, 7/16-14x1	830814	2	2
S-8	HOSE	830796	2	2
S-9	BUSHING	830772	1	1
S-10	HOSE END, SAE 45° Female swivel	830793	10	4
S-11	MALE CONNECTOR, 1/4P-1/4-20 45°	830792	8	-
S-12	RESERVALVE	810721X	1	-
S-13	HELM (2.0 CID Standard)	810720X	1	-
	(2.75 CID Optional)	810720-1X	-	-
NOT SHOWN	COUPLER	830891	-	1
SEE	NIPPLE	830892	-	1
PG 48	TEE	830893	-	2
	HOSE ENDS	830793	-	4

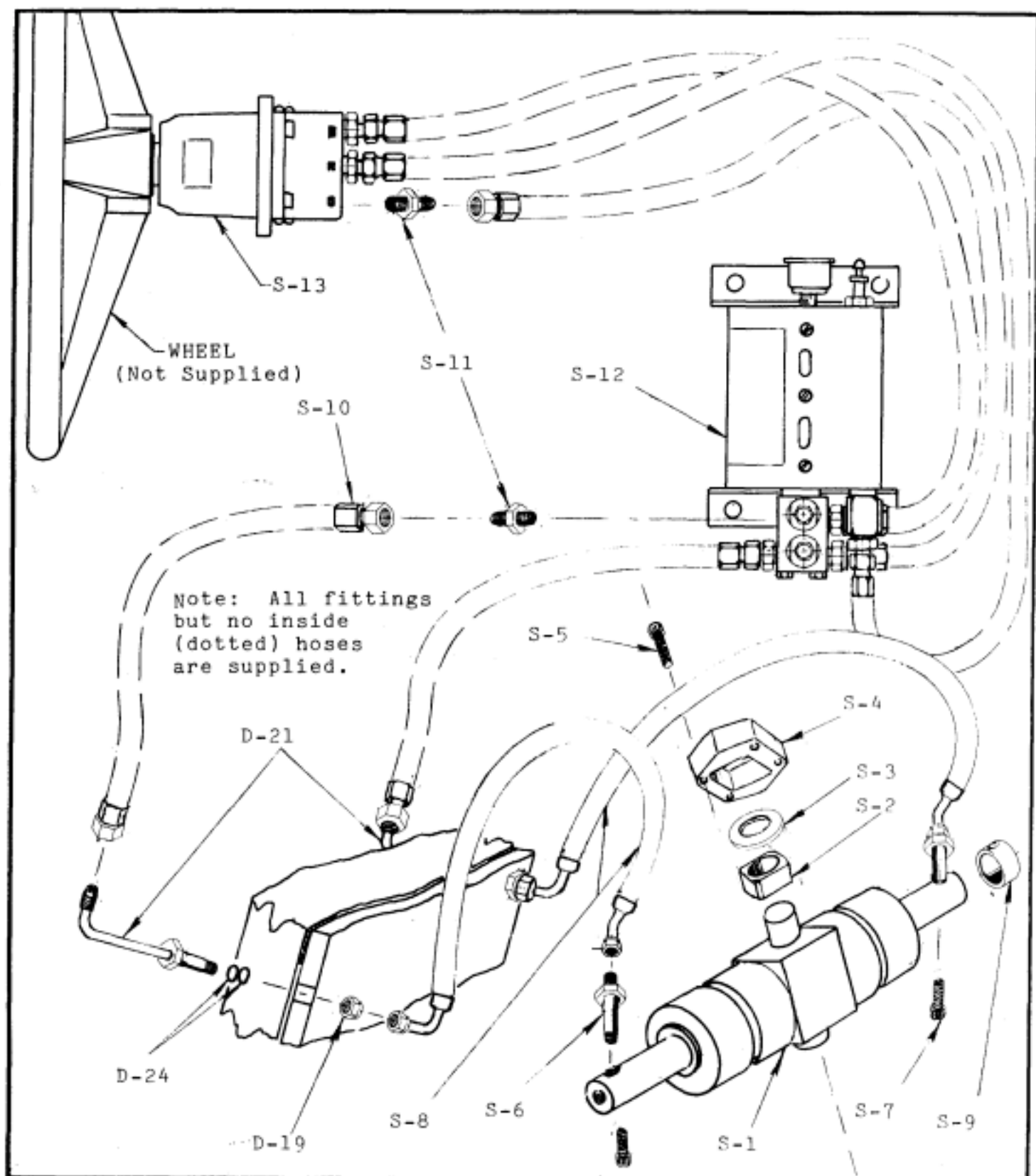


FIGURE VII-8 INTERNAL HYDRAULIC STEERING SYSTEM FOR ALL MODELS
(SEE PAGES 48 AND 117 FOR INFORMATION ON TWIN INSTALLATIONS).

I. LIFT/TRIM SYSTEM

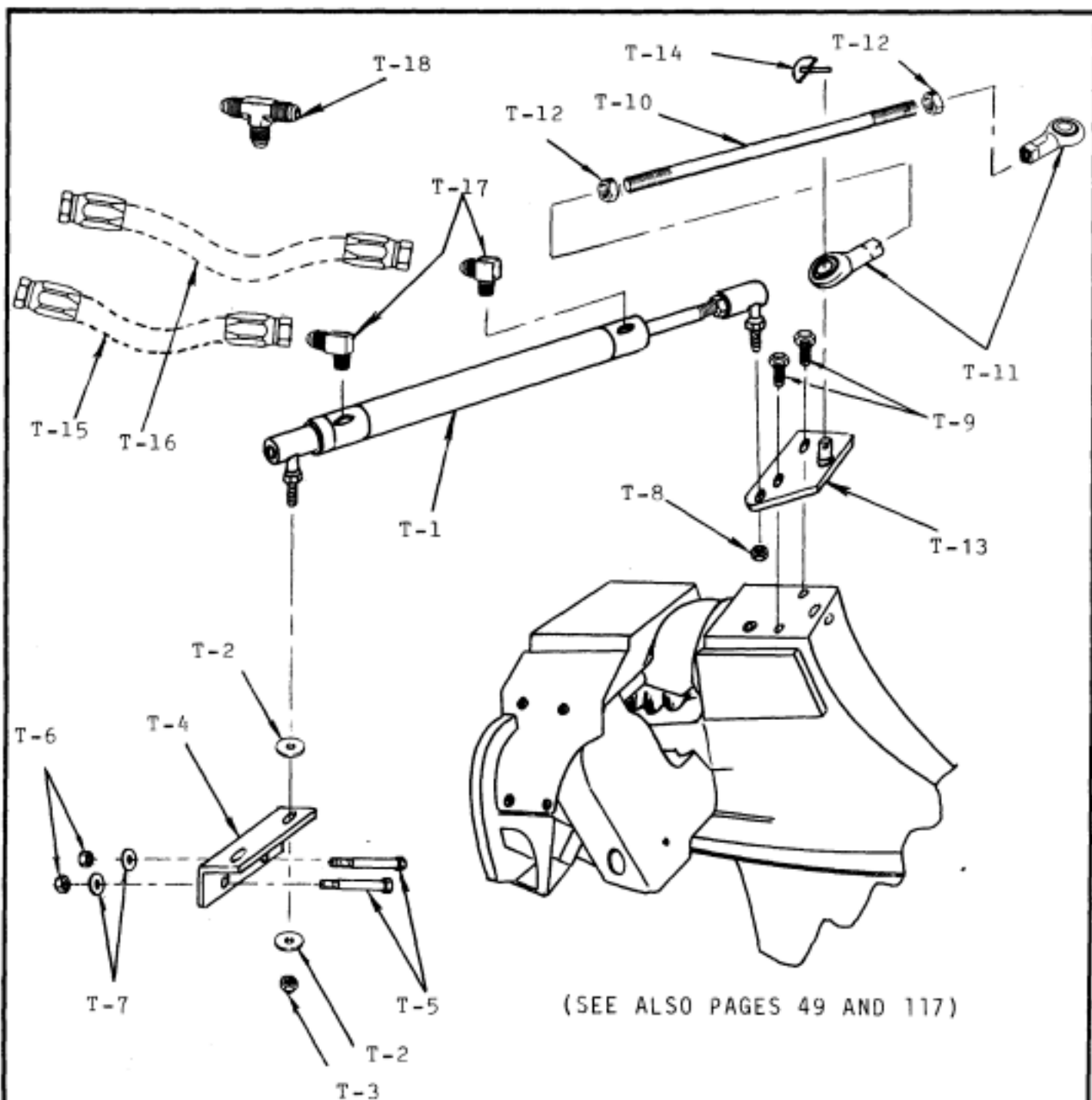
FOR ALL MODELS

REF.	PART NAME	PART NO.	QTY
	LIFT/TRIM KIT (Includes Items Q-1 thru Q-10)	250012X	1
Q-1	CYLINDER	830808	2
Q-2	BUSHING	830779	8
Q-3	O-RING	830781	2
Q-4	PIN, inner	830774	2
Q-5	PIN, outer	830773	2
Q-6	PIN, lock	11-M-12	2
Q-7	HOSE, LP starboard cyl.	830797	1
	HOSE, LP port cyl. (longer than strbrd)	830798	1
Q-8	HOSE, HP starboard cyl.	830799	1
	HOSE, HP port cyl. (shorter than strbrd)	830800	1
Q-9	HOSE, LP inboard (large)	830817	2
Q-10	HOSE, HP inboard (small)	830816	2
	PUMP KIT (Includes Items Q-11 thru Q-27)	250013X	1
Q-11	TEE, 1/8Px5x5	830791	1
Q-12	*TEE, 1/8Px3x3	830790	1
Q-13	PUMP	810715X	1
Q-14	MOUNTING PLATE	830809	1
Q-15	SOLENOID	830822	2
Q-16	HEX SCREW, 5/16-18x1	830844	3
Q-17	NUT, 5/16-18	830833	3
Q-18	WASHER, lock 5/16	830841	3
Q-19	HEX SCREW, 1/4-20x 1/2	830845	4
Q-20	NUT, 1/4-20	830846	4
Q-21	WASHER, lock 1/4	830847	4
Q-22	SCREW, 10-32x1/2	830848	1
Q-23	NUT, 10-32	830849	1
Q-24	WASHER, 10-32	830850	1
Q-25	WIRE, short red	830821	1
Q-26	WIRE, long red	830823	1
Q-27	WIRE, long black	830824	1
Q-28	SWITCH, TOGGLE (standard)	830163	1
Q-29	HARNESS	830322-1	1

*NOTE: Tee, 3x3x3 Part No. 830899 is used after drive S/N7000.

J. EXTERNAL STEERING
(SINGLE STATION)

REF.	PART NAME	PART NO	QTY	
			SINGLE	DUAL
	EXTERNAL STEERING KIT, SINGLE CYLINDER	270111-1X		
	EXTERNAL STEERING KIT, DUAL CYLINDER	270111-2X		
	STEERING CYLINDER KIT (Includes Items T-1 thru T-7)	810712X	1	2
T-1	STEERING CYLINDER	810719X	1	
T-2	WASHER, 1/2 flat	830828	2	
T-3	NUT, hex 1/2-20 lock	830839	1	
T-4	BRACKET, transom	830820	1	
T-5	BOLT, 3/8-16x3 1/4 hex	830815	2	
T-6	NUT, 3/8-16 hex	830758	2	
T-7	WASHER, 3/8 flat	830759	2	
T-8	NUT, 1/2-20 hex	830760	1	2
T-9	BOLT, 1/2-20x1 1/4 hex	830720	2	4
	TIE BAR ASSEMBLY (Length to be specified) (Includes Items T-9 thru T-12)			1
T-10	ROD, 3/4-16 th'd ends	830801		1
T-11	TERMINAL EYE, 3/4-16	830802		2
T-12	NUT, 3/4-16	830803		2
T-13	BRACKET, on drive	830812	1	
	BRACKET, with stud	830804		2
T-14	PIN, retainer 1/4 diameter	830805		2
T-15	HOSE, SAE 5 (Short)	830861	1	1
T-16	HOSE, SAE 5 (Long)	830862	1	1
T-17	ELBOW 90°, 1/4P-SAE 5x45°	830863	2	4
T-18	TEE SAE, 5x5x5	830864		2



(SEE ALSO PAGES 49 AND 117)

NOTE: HYDRAULIC TIE BARS NOT REQUIRING THE STEEL BAR ARE AVAILABLE FOR SYNCHRONIZING SOME TYPES OF WIDELY SPACED DRIVES.

FIGURE VII-10 TYPICAL EXTERNAL HYDRAULIC STEERING SYSTEM