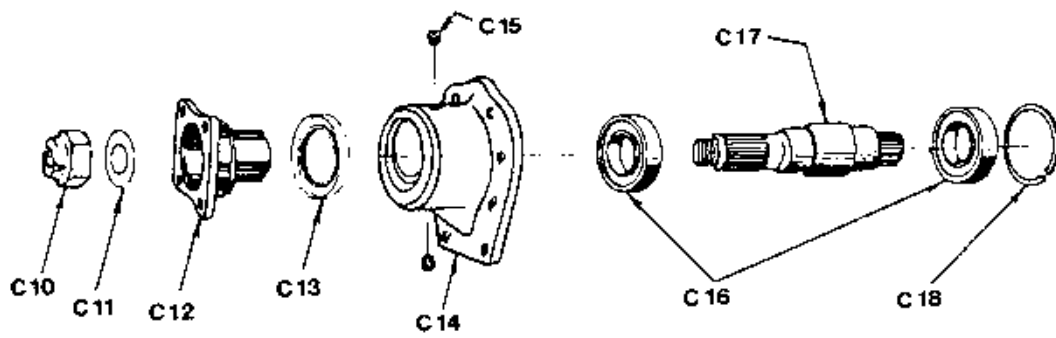


Stern Powr

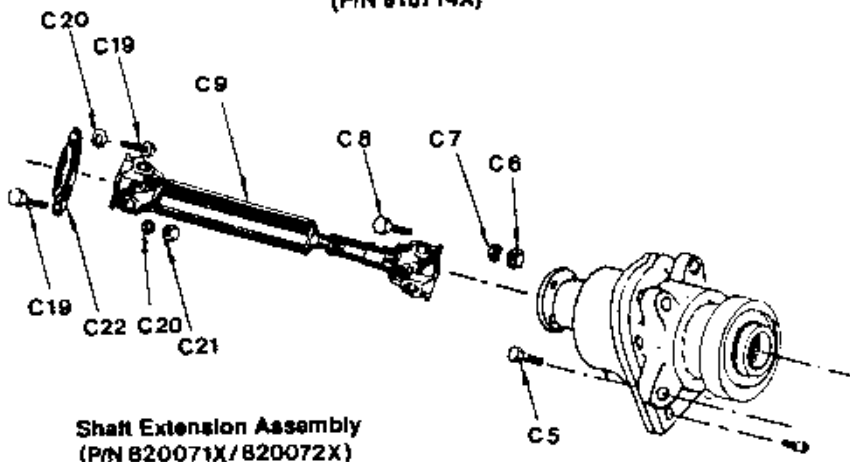
1000

Deletegning

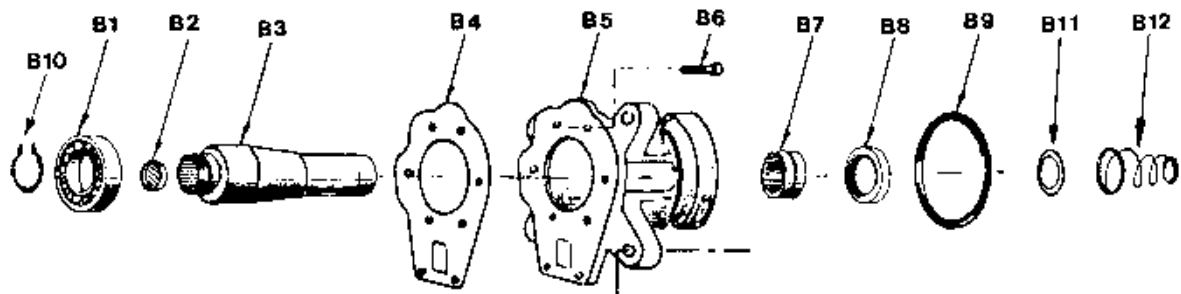
DESCRIPTION	PART NO	QUAN
ENGINE INTERFACE GROUP		
Gear/Int Hsng Assy 71 Size	910011X	
72 Size	910012X	
Intermed Housing Assy (Incl Items B1thruB12)	910000X	
B1 Bearing ball (Rev Gear Part)	830725	1
B2 Plug Seal	830780	1
B3 Sleeve	830722	1
B4 Gasket	7-M-8	1
B5 Intermediate Hsng	830731	1
B6 Bolt 7/16-14x1 Socket	830830	8
B7 Bearing Roller	830726	1
B8 Seal Oil	830727	1
B9 O Ring	830728	1
B10 Snap Ring	830721	1
B11 Washer Delrin	930971	1
B12 Cone Spring	930968	1
Optional Shaft Kit 4"	820071X	
(Incl Items C5-9andC19-22) 5"	820072X	
C5 Bolt 7/16-14x1 1/4 Hex	830838	4
C6 Nut 7/16-20	830760	4
C7 Washer 7/16 Lock	500357-12	4
C8 Bolt 7/16-20x1 1/4 Hex	830761	4
C9 Shaft Extension Assy	810713(L)X	1
Int Hsng Adapter Assy (Incl Items C10thruC18)	810714X	1
C10 Nut 1-20 Hex	830843	1
C11 Gasket Oil Seal	830762	1
C12 Flange	830768-1	1
C13 Oil Seal	830727-1	1
C14 Adaptor	830766	1
C15 Plug Oil Fill/Drain	830510	2
C16 Bearing Ball	830770	1
C17 Shaft	830764	1
C18 Ring Retainer	830767	1
Adapter Plate Kit 4"	810711X	
(Incl Items C19thruC22) 5"	810711-1X	
C19 Bolt 7/16-20x1 1/4 Hex	830761	8
C20 Washer 7/16 Lock	500357-12	8
C21 Nut 7/16-20 Hex	830760	4
C22 Adapter Plate (5"/72 Size)	830763	1
(4"/71 Size)	830763-1	



**Intermediate Housing Adapter Assembly
(P/N 810714X)**



**Shaft Extension Assembly
(P/N 820071X/820072X)**



(bolted for extension only)

**Intermediate Housing Assembly
(P/N 810000X)**

Figure 4 INBOARD DRIVE ASSEMBLIES

DESCRIPTION	PART NO	QUAN
Transom Group(Items A, D & G)	910001X	
Service Group(Items A1/20 and 25/29)	920012X	
A1 Gasket, Transom	930910	1
A2 Nut 1/2-13	830081	9
A3 Washer 1/2-1 1/4	930956	5
A4 Stud, transom	830775	9
A5 Blind stud	830819	4
A6 Bolt, feed block	830474	2
A7 Bolt, boot holder	830837	6
A8 Gasket, cap transom	930921	1
A9 Cover,transom	930906	1
A10 Screw,cover & pad	830057	4
A11 Transom Housing	930905	1
A12 Feed Block	930932	1
A13 Gasket, feed block	930933	1
A14 Thrust Washer	930914	2
A15 Pivot Pin	930913	1
A16 Support Tongue	930907	1
A17 Dowel	930950	2
A18 Bolt, support tongue	830840	4
A19 Anode	830130	1
A20 Screw, anode	830139	2
A25 Gasket, boot holder	830782	1
A26 Boot Holder	830733	1
A27 Bearing, yoke trunion	930952	1
A28 Clamp Feed Block	930934	1
A29 Washer 1/2-7/8	930948	4
Bootholder Retrofit Kit (A30/32 & A25)	920018X	
A30 Boot holder (new)	930866	1
A31 Stud	930867	6
A32 Nut	830905	6
A33 Washer	830865	6
Blank Exhaust Kit (A21thru24)	910002X	
A21 Gasket, exhaust	930919	2
A22 Lock Washer	830836	8
A23 Bolt, Exhaust Blank	930957	8
A24 Block Off Plate	930965	2
Yoke, Service Group (D1thruD13)	920003X	
D1 Yoke	930004	1
D2 Screw, anode	830139	4
D3 Anode	930966	2
D4 Bushing	930954	2
D5 Bushing, yoke trunion	930911	1
D6 Bearing, yoke pivot	930953	1
D7 O Ring	930977	1
D8 Stud, yoke steering	930938	4
D9 Dowel	930950	2
D10 Washer	930940	1

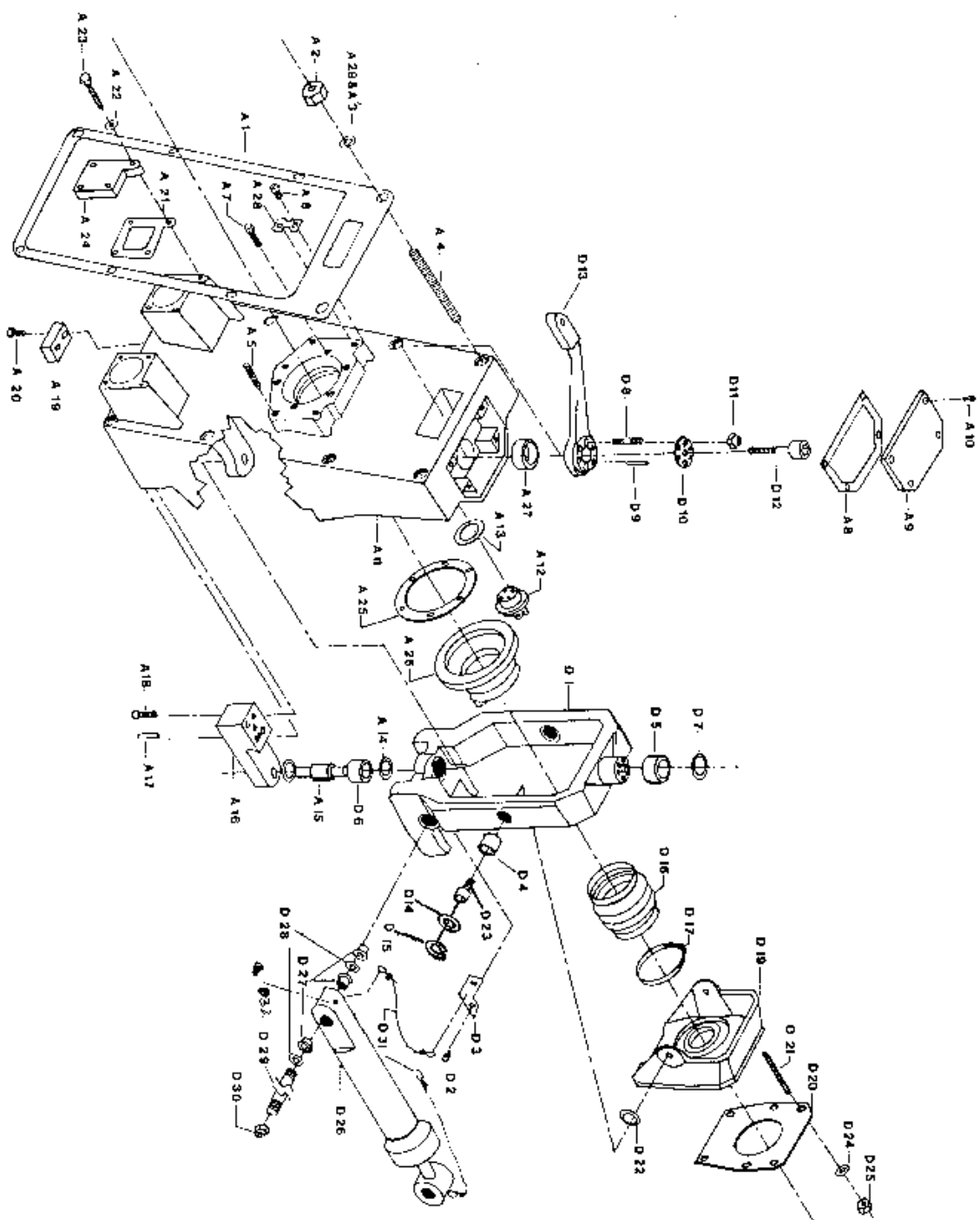


Figure 5a TRANSOM YOKE AND BELL HOUSING GROUP

D11 Nut, yoke steering	930939	4
D12 Skt Hd Cap Screw	930941	1
D13 Steering Arm	930909	1
D14 Washer	930850	2
D15 Retaining Ring	930960	2

DESCRIPTION	PART NO	QUAN
Boot & Clamp Group (D16 and 17)	920004X	
D16 Boot with Spring	19-M-9	1
D17 Clamp	830407	2
BELL HOUSING GROUP (D19thru25)	920005X	
D19 Bell Housing	930003	1
D20 Gasket,P/L to bell hsng	930922	1
D21 Stud	930946	6
D22 Washer, pivot bolt	930915	2
D23 Pivot Bolt	930912	2
D24 Washer	930947	6
D25 Nut 1/2-20	930948	6
TRIM CYL. & HARDWARE (D26thru31)	920006X	
D26 Trim Cylinder	930927	2
D27 Bushing	<u>930955</u>	12
D28 Spacer, yoke end cyl. .150	930923	4
D29 Trim Rod	930925	2
D30 Nut, trim rod	930926	4
D31 Ground Wires Cyl ends	930972	4
D32 Screw 10-24X3/8 Cyl ends	830474	4
PUMP & PLATE ASSEMBLY (ALL F ITEMS)	910007X	
F1 Trim Pump	810715X	1
F2 Plate, mounting	830809	1
F3 Nut, 10-32	830849	1
F4 Washer, #10	830850	1
F5 Screw, 10-32	830848	1
F6 Battery Wire Red	830823	1
F7 Battery Wire Black	830824	1
F8 Wire Red Short	830821	1
F9 Solenoid	830822	2
F10 Screw hex 1/4-20	830845	4
F11 Washer 1/4	830846	4
F12 Nut 1/4-20	830847	4
F13 Bolt 3/8-16	930963	2
F14 Washer	830850	2
F15 Nut	830849	2
F16 Adapter	930962	2

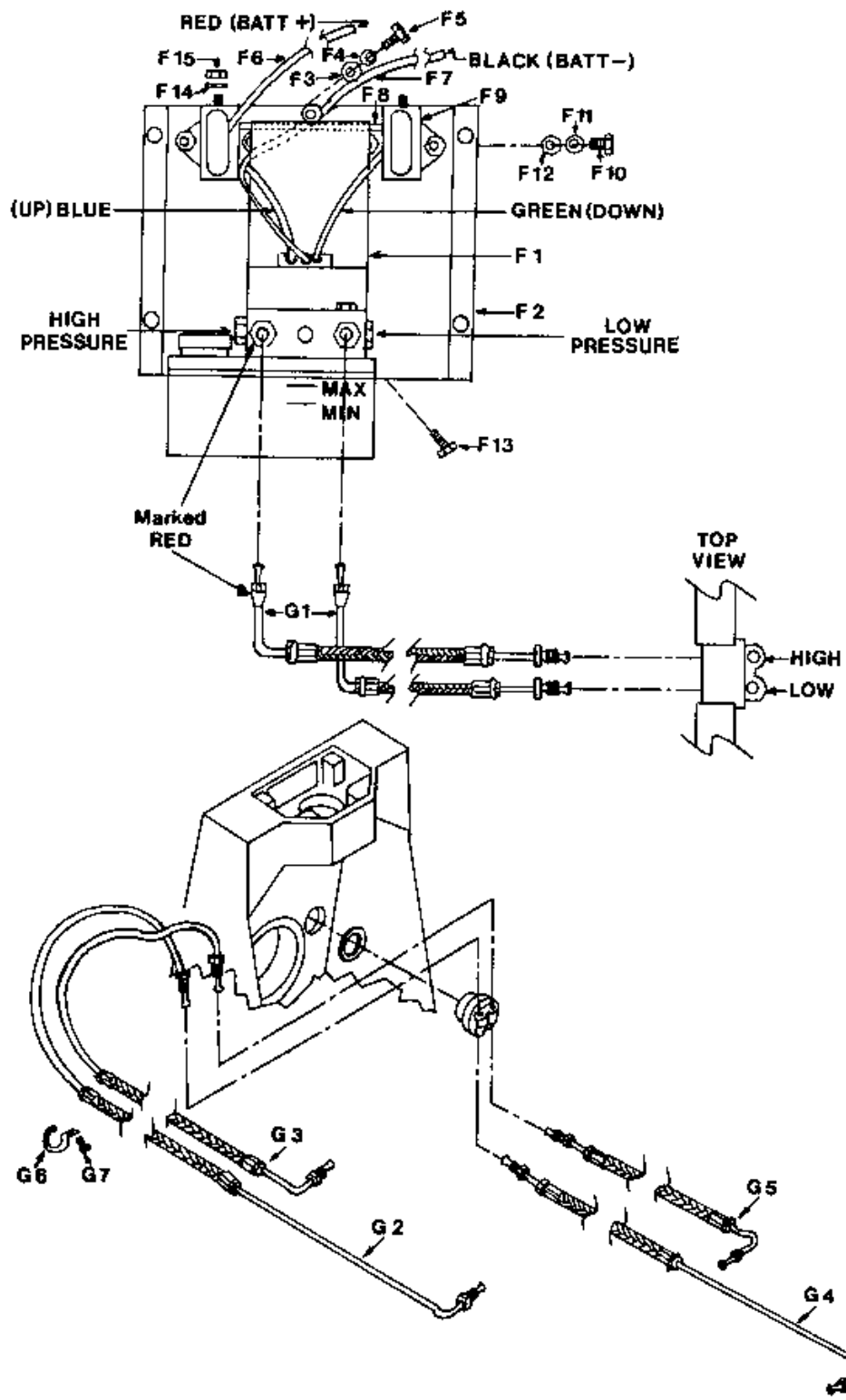


Figure 6 TRIM/LIFT HYDRAULICS GROUP

	HOSES ALL G ITEMS EXCEPT G1	920008X	
G1	Inside Hose	930961	2
G2	Hose Low Pressure Port	930928	1
G3	Hose High Pressure Port	930930	1
G4	Hose Low Pressure Star.	930929	1
G5	Hose High Pressure Star.	930931	1
G6	Clamp Hose	930967	1
G7	Screw Clamp	830474	1

	DESCRIPTION	PART NO	QUAN
LNG	UPR ASSY LL&RR (L1-25,L30-37 & E1)	910009X	
	LR&RL (L1-22,L24-37 & E1)	910010X	
SHT	UPR ASSY LL&RR (L1-25,L30-37 & E1)	910039X	
	LR&RL (L1-22,L24-37 & E1)	910040X	
L1	Screw Input Shaft	500667-7	1
L2	Washer Input Shaft	830049	1
L3	Input Bearing Cap	930902	1
L4	Seal Input	15-M-1	1
L5	O Ring Bearing Cap	15-M-4	1
L6	Screw Input cap	930949	4
L7	Screw Top Cap	830070-5	4
L8	Bearing Assy Front	810037X	1
L15	Bearing Assy Rear	810038-1X	1
L17	Bearing Thrust	550658	1
L18	Race Thrust Bearing (See Appendix I/Races & Spacers)	8-M-1	1
L19	Bearing Stem Gear Lg	550656-1	1
L20	Bearing Stem Gear Sm	550657	1
L21	Pin Dowel	500601-14	1
L22	Case Upper Long	930001	1
	Or Case Upper Short	930002	
L23	Input Shaft LL & RR	3-M-1	1
L24	Gearset (See Appendix II/Gearsets)		1
L25	Spacer (See Appendix I/Spacers)	830085-()	2
L26	Shaft Input LR & RL	3-M-3	1
L28	Bushing Input Shaft	830399	1
L29	Spacer Input Shaft (See Appendix I)	830400	1
L30	Pad Wear	930936	2
L31	Screw Pad	830057	8
L32	Gasket Top Upper	930920	1
L33	Cap Upper	930010	1
L36	Cap Dip Stick	930975	1
L37	End Yoke	2-4-3161	1

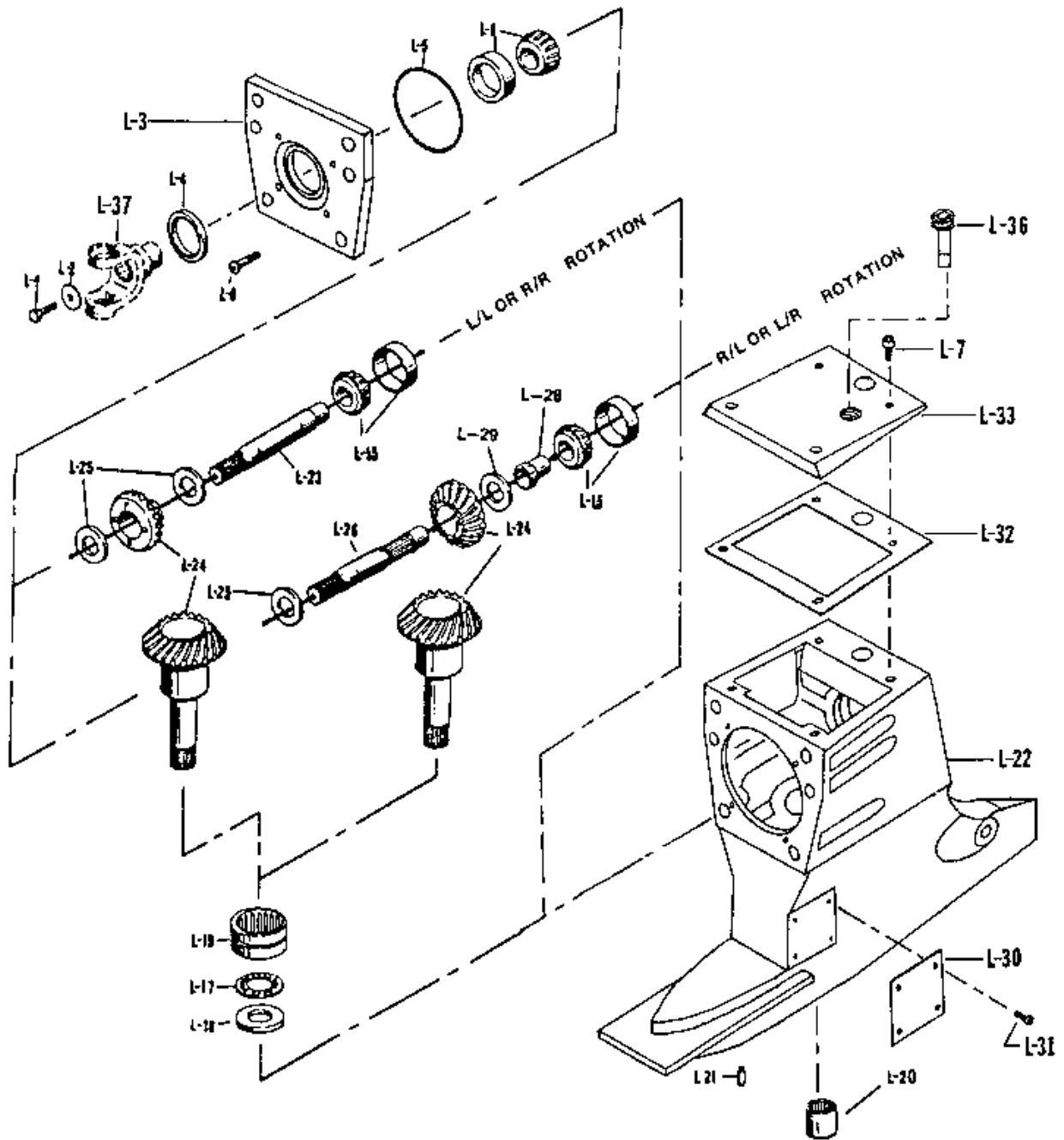


Figure 7 UPPER CASE ASSEMBLY GROUP

DESCRIPTION	PART NO	QUAN
UNIVERSAL JOINT ASSEMBLY		
Center Yoke Assembly (Items E2thruE9 and L37)	914411-1	1
Center Yoke Assembly (Items E2thruE9)	209404	1
E2 Shaft Yoke	2-82-871	1
E3 Yoke Center	2-26-257	1
E5 Kit U-Joint (E6thruE9) This is a later interchangeable form of 5-153X	5-252X	2
E6 Cross Journal (N.S.S.)	2-5-386X	2
E7 Bearing Assembly (N.S.S.)	2-6-208X	8
E8 Gasket (N.S.S.)	2-86-89	8
E9 Ring Snap (N.S.S.)	2-7-29	8
E10 O Ring	15-M-10	1
TIE BAR ASSEMBLY		
J1 Tie Bar (Specify Engine Spacing)	910015X 830801	1
J2 Flex Joint	830802	2
J3 Locknut	830803	2
J4 Lock Pin	830805	2
(Alternative S/S Lock Bolt and Nut P/N 930997 and 930998)		
J5 Anchor Pin	930973	2
STEERING ASSEMBLY		
K1 Bracket	910020X 930908	1
✓ K2 Pivot Bolts	930942	2
K3 Pivot Bolt Pins	930945	2
K8 Cotter Pin	930944	1
K5 Lock Nut	830787	1
✓ K6 Lever Arm Adapter	930951	1
✓ K7 Adapter Pin	930943	1
✓ K12 Bushing	939937	2
Steering Kit Options		
K4 Hydr Cylinder 10.2CID	930970	1
M Kit For Manual:		
K9 Manual Hydr Helm 2 CID	810723X	1
2.75 CID Option	810724X	
K10 Cyl Fitting 1/4 pipe-6	830953	2
K11 Reusable Hose fitting SAE45-6	830955	4
P Kit For Power:		
K22 Power Hydr Helm w/Valve/Column	3.0CID CHR13	1
	4.5CID CHR11	
	7.4CID CHR12	
K23 Helm Valve Adapter	830954	4
K24 Hose Adapter	830950	4
K25 Pump Hose Fitting (Standard)	830957	1
K11 Reusable Hose Fitting SAE45-6	830955	6

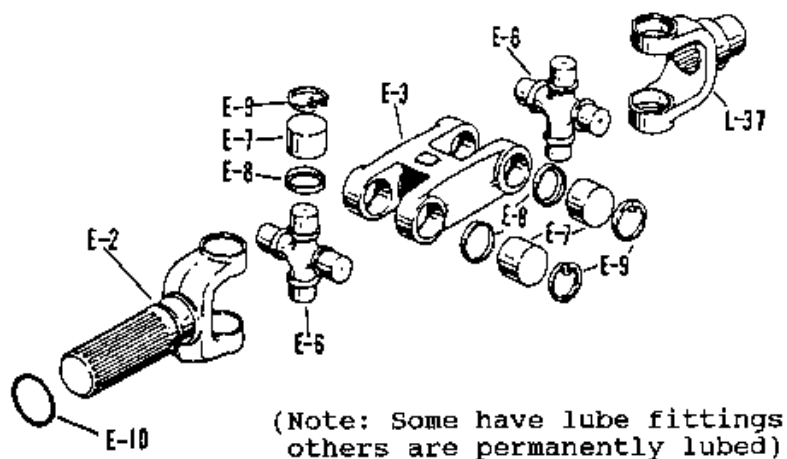


Figure 8 UNIVERSAL JOINT GROUP

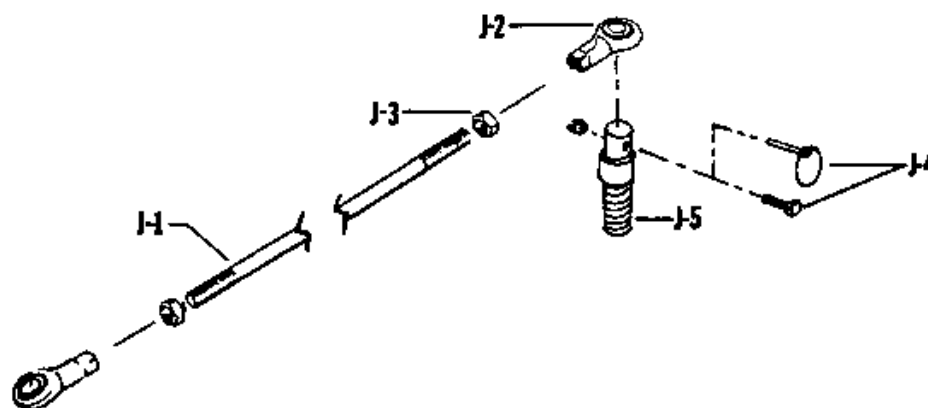
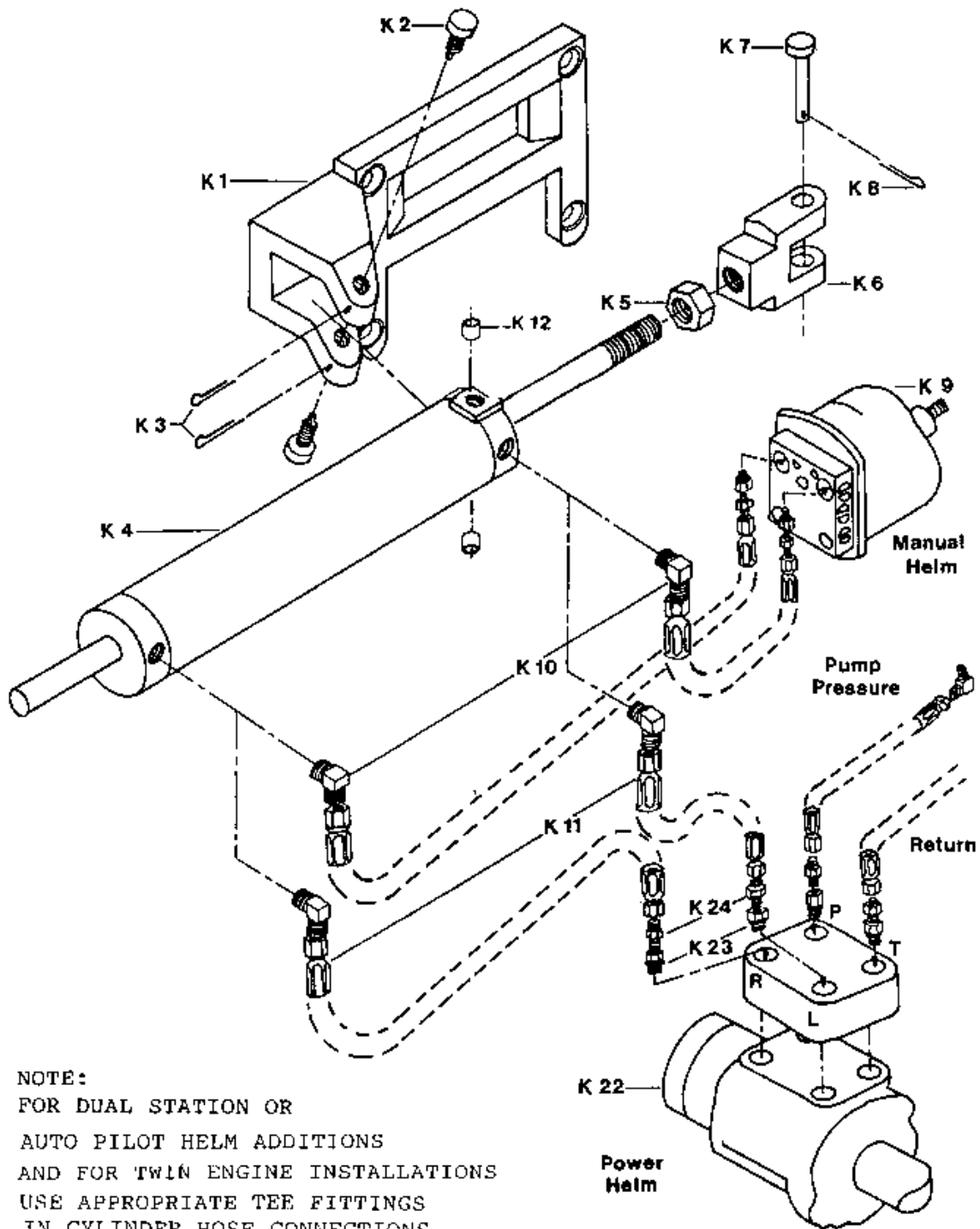


Figure 9 TIE BAR ASSEMBLY



NOTE:
 FOR DUAL STATION OR
 AUTO PILOT HELM ADDITIONS
 AND FOR TWIN ENGINE INSTALLATIONS
 USE APPROPRIATE TEE FITTINGS
 IN CYLINDER HOSE CONNECTIONS.

Figure 10 HYDRAULIC STEERING COMPONENTS

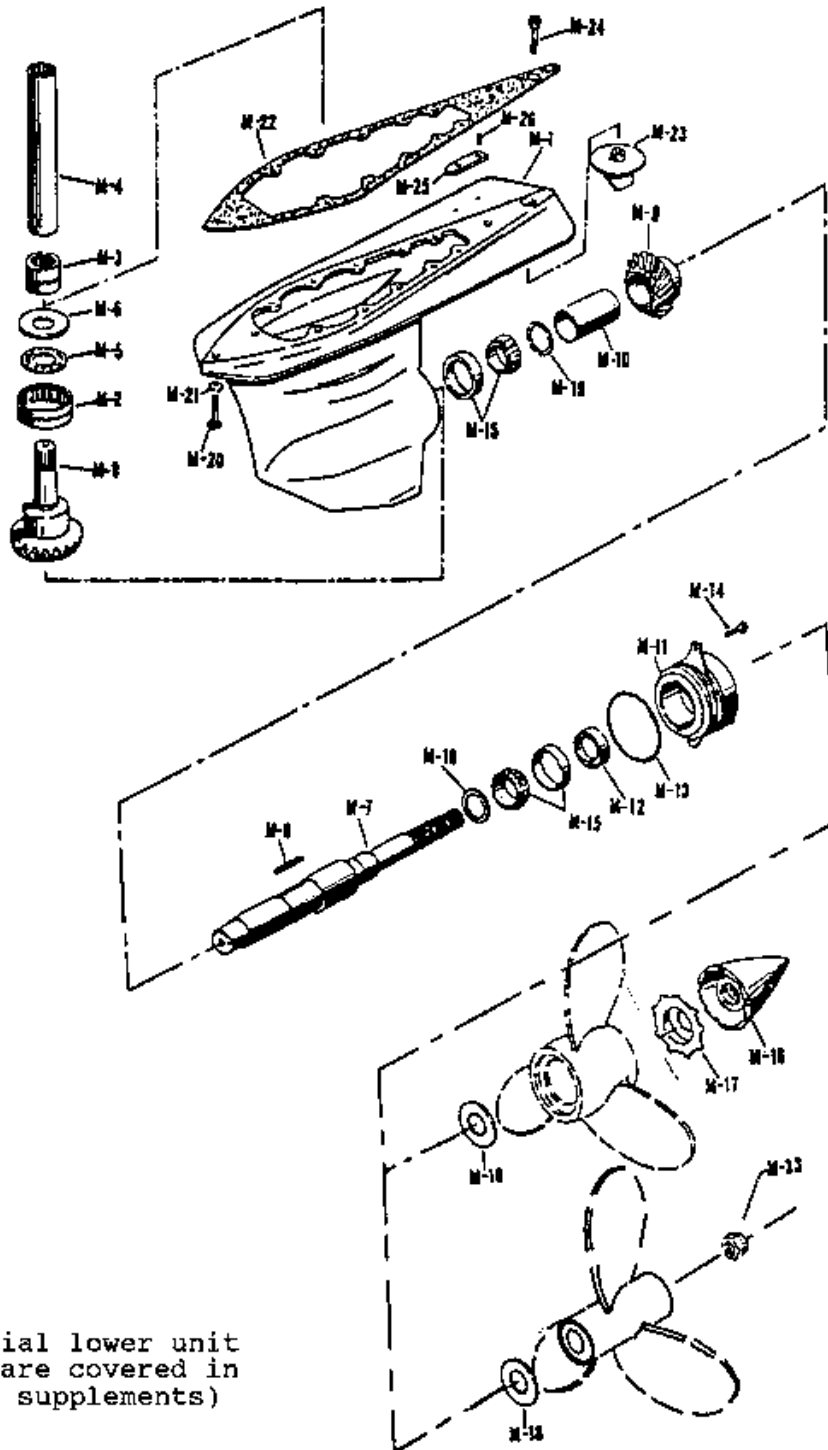
DESCRIPTION	PART NO	QUAN
EXHAUST ELBOW KIT (P1-7, & A21) (Optional Design for 7.3T liter International Diesel Engine)	910030X	
P1 Y Pipe	930916	1
P2 Port Riser	930918	1
P3 Strbrd Riser	930917	1
P4 Hose Section Exhaust	930958	3
P5 Clamps	930959	12
P6 Bolts	930974	8
P7 Washer	930981	8
A21 Gasket, Exhaust	930919	2

LOWER CASE ASSEMBLY

Lower Case (Small) Assembly	820011X
Lower Case (Large) Assembly	820013X

(Note: For Lower Assemblies ratio and rotation must be specified. All items except M4 and M20thru24 are included.)

M1 Case Lower Sml(max 17 in prop dia) Lrg(max 19 in prop dia)	1-M-3 1-M-3-1	1 1
M2 Bearing Stem roller (large)	550656-1	1
M3 Bearing (small)	550657	1
M4 Coupler Vertical		1
For Short Upper/Sml Lower (7.7 in)	12-M-1-1	
Long Upper/Sml Lower (8.7 in)	12-M-1-3	
Short Upper/Lrg Lower (9.7 in)	12-M-1-13	
Long Upper/Lrg Lower (10.7 in)	12-M-1-10	
(See R5 in Vertical Spacer Section for Special Couplers)		
M5 Bearing Stem Gear Thrust	550658	1
M6 Race (See Appendix I/Races & Spacers)	8-M-1-()	2
M7 Shaft Output	9-M-4	1
M8 Key Shaft	830193	1
M9 Gear Assembly (See Appendix II/Gearset Table)		1
M10 Sleeve Shaft	830192	1
M11 Cap Output	21-M-3	1
M12 Seal Output	15-M-3	1
(Seal kit 810142X with added spacer used in service replacement)		
M13 O Ring Output	15-M-5	1
M14 Screw Bearing Cap	830023	2
M15 Bearing Assy (Cone and Cup)	810037X	2
M16 Prop Cone Nut (For 17 in Prop)	830315	1
M17 Lockwasher for above Nut	830001	1
M18 Hub Support	830004	1
M19 Spacer Output Shaft (See Appendix I/Races and Spacers)	830084-()	1



Note:
 (Special lower unit
 forms are covered in
 manual supplements)

Figure 11 LOWER CASE GROUP

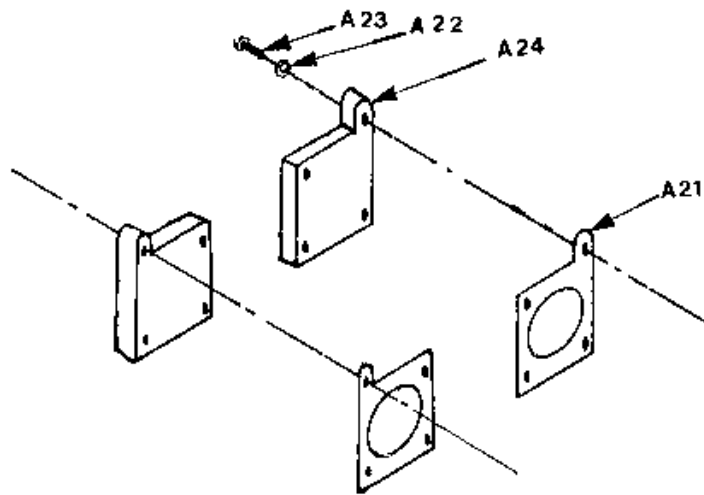


Figure 12 BLANK EXHAUST COMPONENTS

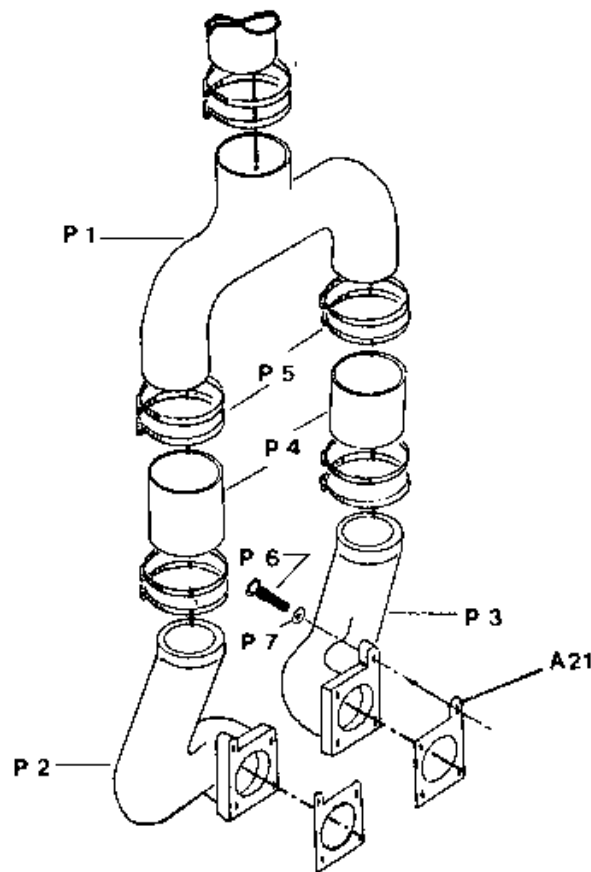


Figure 13 EXHAUST KIT 7.3 TURBO ENGINE

	DESCRIPTION	PART NO	QUAN
M20	Screw Upper/Lower Case	830021	14
M21	Seal Washer for above	830020	14
M22	Gasket Upper/Lower	7-M-2	1
M23	Trim Tab	830134	1
M24	Screw Trim Tab (Short Upper) (Long Upper)	830070 830070-6	1 1
M25	Anode Cavitation Plate	830136	1
M26	Screw Anode	830139	2
M33	Nut Propeller Stainless	830498	1

VERT	SPACER KIT(R1-5) (Lng Upr/Sml Lwr)	810502-7X	
	(Lng Upr/Lrg Lwr)	810502-8X	
	(Sht Upr/Sml Lwr)	810502-3X	
	(Sht Upr/Lrg Lwr)	810502-4X	

R1	2 inch Vertical Spacer	830384	1
R2	Bolts	830021-1	14
R3	Gasket	7-M-2	2
R4	Dowel	500601-14	1
R5	Vertical Coupler		1
	With Long Upper/Sml Lower	12-M-1-5	
	Long Upper/Lrg Lower	12-M-1-12	
	Short Upper/Sml Lower	12-M-1-3	
	Short Upper/Lrg Lower	12-M-1-10	
R6	Washer	830020	14

OPTIONAL TRIM/LIFT INSTRUMENTATION

	Single Station Kit (V1thruV5)	910021X	
	Dual Sta Conversion Kit (V2/6/7)	910022X	
	Complete Sender Assembly (V4&V5)	910023X	
V1	Single (or Remote) Station Panel	810760X	1
V2	Extension Harness (19ft)	810709X	1
V3	Terminal (Pump and Sender) Harness	810761X	1
V4	Sndr w/Hrns & Mnt Scrws(V8/9/10)	810762X	1
V5	Sender Lever/Spring Assembly(V8/9)	810763X	1
	Additions to Single Sta Kit for Dual Sta		
V6	Dual Station Master Panel	810764X	1
V7	Y Harness Adapter	810765X	1
V2	Extension Harness (19ft)	810709X	1

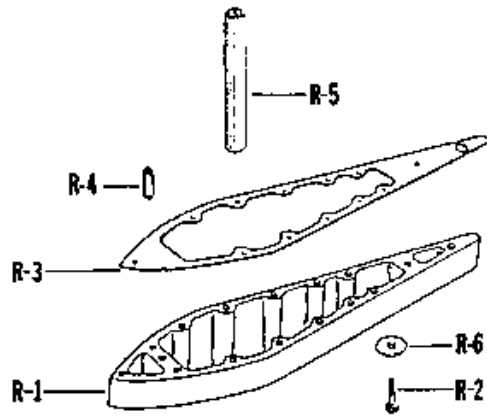


Figure 14 VERTICAL SPACER KIT

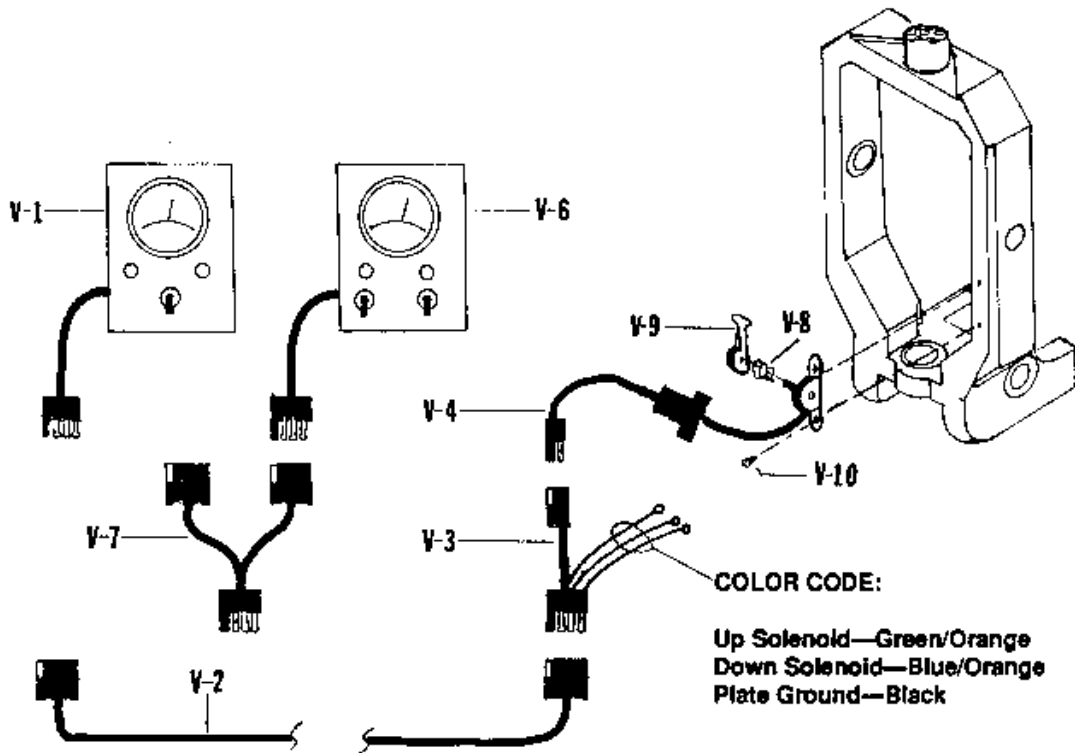


Figure 15 TRIM/LIFT INDICATOR AND CONTROL

TABLE OF RACES AND SPACERS

L-18 or M-6		L-25		L-29	
PART NO.	THICKNESS INCHES	PART NO.	THICKNESS INCHES	PART NO.	THICKNESS INCHES
8-M-1-1	.238	830085-1	.094	830400-1	.149
8-M-1-2	.239	830085-2	.096	830400-2	.151
8-M-1-3	.240	830085-3	.098	830400-3	.153
8-M-1-4	.241	830085-4	.100	830400-4	.155
8-M-1-5	.242	830085-5	.102	830400-5	.157
8-M-1-6	.243	830085-6	.104	830400-6	.159
8-M-1-7	.244	830085-7	.106	830400-7	.161
8-M-1-8	.245	830085-8	.108	830400-8	.163
8-M-1-9	.246	830085-9	.110	830400-9	.165
8-M-1-10	.247	830085-10	.112	830400-10	.167
8-M-1-11	.248	830085-11	.114	830400-11	.169
8-M-1-12	.249	830085-12	.116	830400-12	.171
8-M-1-13	.250	830085-13	.118	830400-13	.173
8-M-1-14	.251	830085-14	.120	830400-14	.175
8-M-1-15	.252	830085-15	.122	830400-15	.177
8-M-1-16	.253	830085-16	.124	830400-16	.179
8-M-1-17	.254	830085-17	.126	830400-17	.181
8-M-1-18	.255				
8-M-1-19	.256				
8-M-1-20	.257				

M-19	
PART NO	THICKNESS INCHES
830084-1	.098
830084-2	.100
830084-3	.102
830084-4	.104
830084-5	.106
830084-6	.108
830084-7	.110
830084-8	.112
830084-9	.114
830084-10	.116
830084-11	.118
830084-12	.120
830084-13	.122
830084-14	.124
830084-15	.126
830084-16	.128

MASTER GEARSET REFERENCE TABLE

OVERALL RATIO	UPPER GEARSET	LOWER GEARSET
	(Left or Right Hand Input)	(Left Hand Output)
1.00	810001MX (Red)	810084MX (Red)
1.26	810001MX	810085MX (Blue)
1.32	810002MX (Blue)	810084MX
1.60	810004MX (Green)	810084MX
1.66	810002MX	810085MXH
2.00	810004MX	810085MXH
		(Right Hand Output)
1.00	810277MX (White)	810092MX (Yellow)
1.26	810277MX	810093MX (Pink)
1.32	810278MX (Tan)	810092MX
1.60	810279MX (Orange)	810092MX
1.66	810278MX	810093MXH
2.00	810279MX	810093MXH

Note: Standard rotation terminology assumes engine (Input) and propeller (Output) to be viewed from the rear. Left Hand is equivalent to Counterclockwise and Right Hand is Clockwise. The colors are used to assist identity of gearset types in the form of two small color dots on both gear elements of the gearsets. (Check position of upper gearsets on shaft for given rotations.)

INDIVIDUAL GEAR PART NUMBER IDENTIFICATION TABLE

Gearset	Driven Gear	Driving Gear	Gearset ratio
810001X	* 4-M-1 21T	4-M-1 22T	.954
810002X	* 4-M-2 24	5-M-2 19	1.263
810004X	* 4-M-4 26	5-M-3 17	1.529
810084X	4-M-14 22	* 5-M-1 21	1.047
810085X	74-152R 25	* 74-152P 19	1.316
810092X	4-M-60 22	* 5-M-45 21	1.047
810093X	4-M-65 25	* 5-M-50 19	1.316
810277X	* 5-M-31 21	4-M-38 22	.954
810278X	* 4-M-39 24	5-M-32 19	1.263
810279X	* 4-M-40 26	3-M-33 17	1.529

* Designates the Stem Gear of the Gearset. The first column shows stem gears in the upper assembly.

Note: Overall drive ratio is the product of the ratios of the upper and lower gearsets selected.