

Stern Power

80 +90 serie

DELEBOK

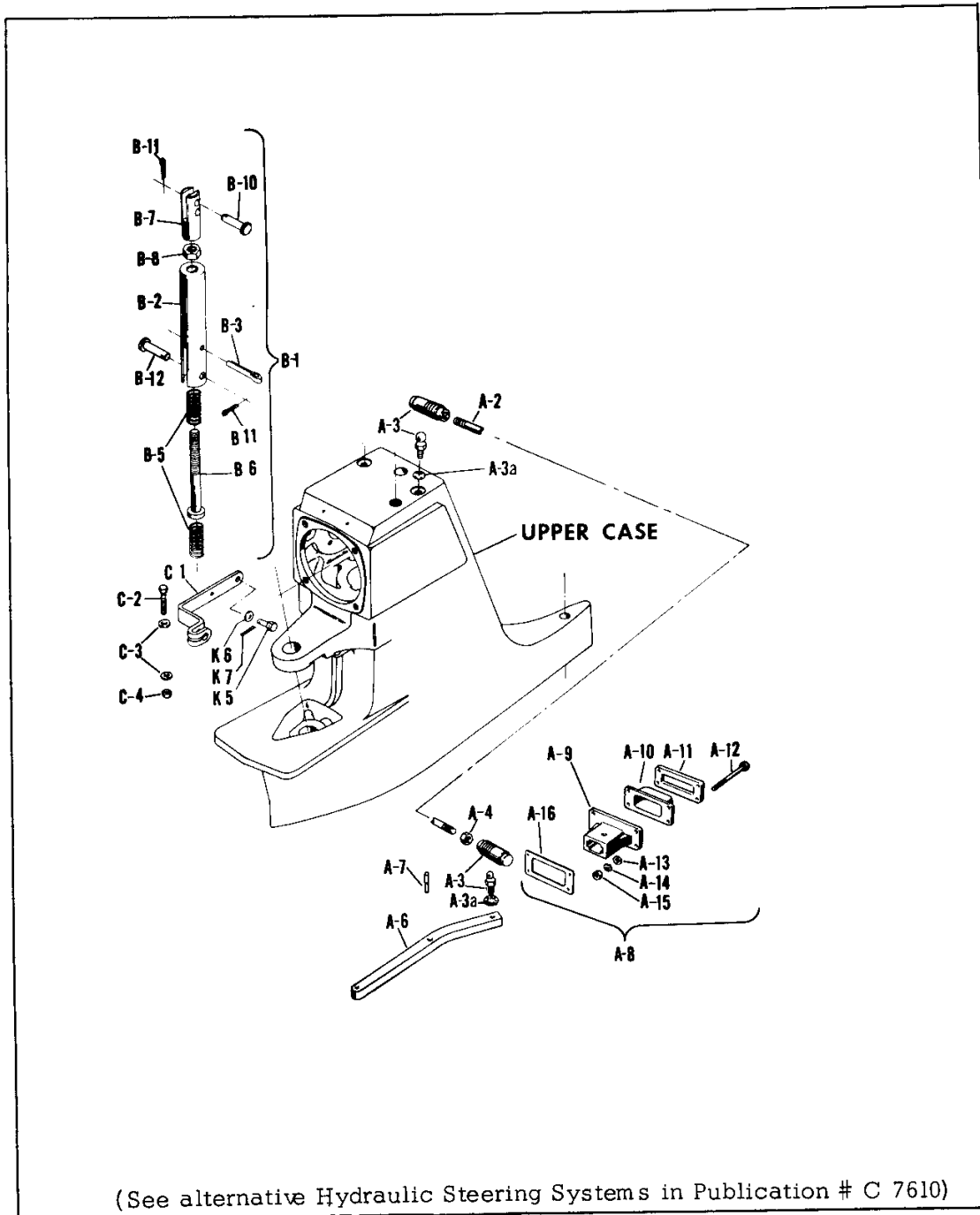
SECTION 8 PARTS, SUB-ASSEMBLIES AND KITS BY PRINCIPAL GROUPS

**(A) STEERING CONTROL GROUP
INTERLOCK SHIFT BOOSTER GROUP • INTERLOCK LEVER GROUP**

REF. NO.	PART NAME	PART NO.	QTY.	FOR MODEL	60	80	81	91
STEERING CONTROL GROUP								
(includes items A-1 thru A-16)								
A-1	ROD SUB-ASSY., steering (includes items A-2 thru A-4)	810126X	1		1	1	1	1
A-2	ROD, steering	11-M-25	1		1	1	1	1
A-3	BALL JOINT, steering rod disconnect	830300	2		2	2	2	2
A-3a	WASHER, starlock	830144	2		2	2	2	2
A-4	NUT, steering rod ball lock	830301	1		1	1	1	1
A-5	ARM SUB-ASSY. KIT, steering (items A-6 and A-7)	810028X	1		1	1	1	1
A-5a	ARM SUB-ASSY. KIT, steering (items A-6 and A-7 plus A-9)	810048X						
A-6	ARM, steering (N.S.S.)	10-M-17	1		1	1	1	1
A-7	PIVOT PIN, Steering arm	11-M-5	1		1	1	1	1
A-8	BRACKET SUB-ASSY., Steering arm	810029X	1		1	1	1	1
(Includes Items A-9 thru A-16)								
A-9	BRACKET, Steering arm (N.S.S.)	24-M-3	1		1	1	1	1
A-10	BOOT, Steering arm	19-M-3	1		1	1	1	1
A-11	PLATE, Steering arm retainer (N.S.S.)	830120	1		1	1	1	1
A-12	BOLT, Steering arm bracket	830036	4		4	4	4	4
A-13	WASHER, Steering arm bracket bolt	830035	4		4	4	4	4
A-14	LOCKWASHER, Steering arm bracket bolt	830034	4		4	4	4	4
A-15	NUT, Steering arm bracket bolt	830015	4		4	4	4	4
A-16	GASKET, Steering arm bracket	7-M-7	1		1	1	1	1
INTERLOCK SHIFT BOOSTER GROUP								
(Includes Items B-1 thru B-12)								
B-1	BOOSTER ASSEMBLY, Interlock shift	810098X	1		1			
(Includes Items B-2 thru B-8)								
B-2	CYLINDER, Interlock shift booster	830195	1		1			
B-3	PIN, Cotter	830017	1		1			
B-5	SPRING, Interlock shift booster	13-M-2	2		2			
B-6	SCREW, Interlock shift booster	830194	1		1			
B-7	CLEVIS, Interlock rod	830140	1		1			
B-8	NUT, Interlock rod clevis	830313	1		1			
B-10	PIN, Interlock shift rod clevis	830059	1		1			
B-11	PIN, Interlock shift rod cotter	830019	2		2			
B-12	PIN, Interlock shift rod clevis	830196	1		1			
INTERLOCK LEVER GROUP								
(Includes Items C-1 thru C-4)								
C-1	LEVER, Interlock	10-M-29	1		1	1	1	1
C-2	BOLT, Interlock lever clamp	830016	1		1	1	1	1
C-3	WASHER, Interlock lever clamp bolt	830014	2		2	2	2	2
C-4	NUT, Interlock lever clamp bolt	830015	1		1	1	1	1

N.S.S. --- Not Sold Separately.

STEERING CONTROL GROUP INTERLOCK SHIFT BOOSTER GROUP • INTERLOCK LEVER GROUP

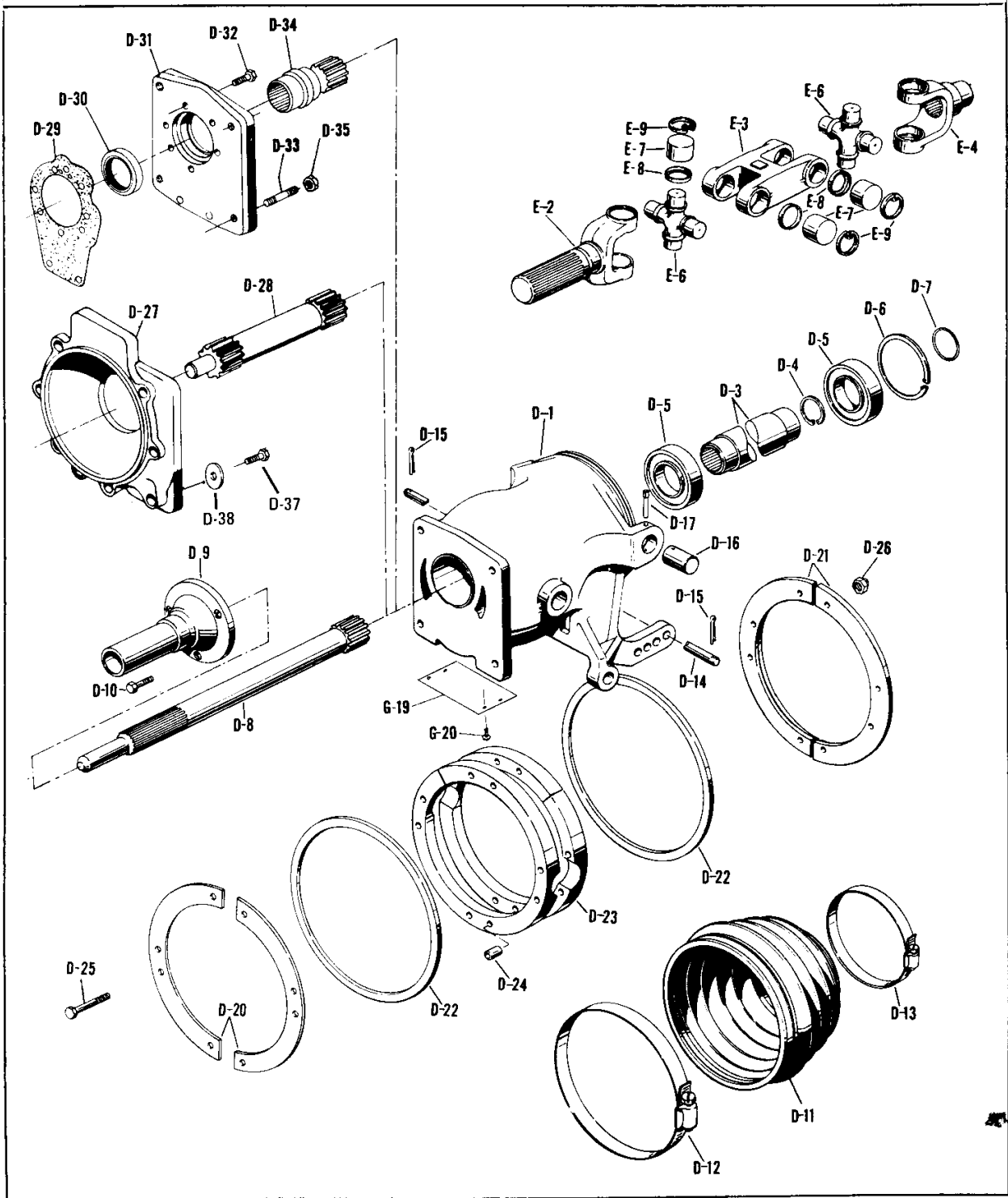


(B) PIVOT HOUSING GROUP CENTER YOKE JOINT ASSEMBLY

REF. NO.	PART NAME	PART NO.	QTY. FOR MODEL			
			60	80	81	91
PIVOT HOUSING GROUP (Includes Items D-1 thru D-39)						
	PIVOT HOUSING SUB-ASSY (open boot form)	810047X	1	1	1	1
	(Includes D-1, D-3, D-5, D-6, G-19 & G-20)					
	PIVOT HOUSING SUB-ASSY (shielded boot form)	810047-1X	1	1	1	1
	(Includes D-1S, D-3, D-5, D-5S, & D-6)					
D-1	HOUSING, pivot (open boot form)	2-M-5	1	1	1	1
D-1S	HOUSING, pivot (shielded boot form)	2-M-14	1	1	1	1
D-2	SLEEVE & SNAP RING SUB-ASSY., drive	810031X	1	1	1	1
	(Includes Items D-3 and D-4)					
D-3	SLEEVE, drive (N.S.S.)	12-M-3	1	1	1	1
D-4	RING, snap	14-M-5	1	1	1	1
D-5	BEARING, pivot housing (open boot form)	550674	2	2	2	2
	BEARING, pivot housing rear (shielded boot form)	550674	1	1	1	1
D-5S	BEARING, pivot housing front (shielded boot form)	585916	1	1	1	1
D-6	RING, snap (Internal)	14-M-3	1	1	1	1
D-7	RING, universal joint seal	15-M-10	1	1	1	1
D-8	SHAFT, clutch drive	25-M-4	1	1	-	-
D-9	RETAINER, drive pinion bearing	26-M-3	1	1	-	-
D-10	BOLT, drive pinion bearing retainer	500397-2	3	3	-	-
D-11	BOOT, pivot housing (open boot form)	19-M-5	1	1	1	1
D-11S	BOOT, pivot housing (shielded boot form)	19-M-9	1	1	1	1
	(Boot always includes wire support 13-M-11)					
D-12	CLAMP, pivot housing boot (large) (open boot form)	830002	1	1	1	1
D-12S	CLAMP, shielded boot and shroud (shield)	830407	3	3	3	3
D-13	CLAMP, pivot housing boot (small) (open boot form)	830003	1	1	1	1
D-14	PIN, pivot housing adjusting	830041	1	1	1	1
D-15	KEY, pivot housing adjusting pin cotter	830017	2	2	2	2
D-16	PIN, pivot housing - support yoke	11-M-3	2	2	2	2
D-17	PIN, pivot housing - support yoke	11-M-12	2	2	2	2
D-20	PLATE, transom (inner)	830071	2	2	2	2
D-21	PLATE, transom (outer)	830153	2	2	2	2
D-22	SEAL, transom plate	830090	2	2	2	2
D-23	SEAL, transom	830074	2	2	2	2
D-24	SPACER, transom seal	830072	16	16	16	16
D-25	BOLT, transom plate mounting (hex head)	830145	8	8	8	8
D-26	NUT, transom plate mounting (hug lock)	830081	8	8	8	8
D-27	ADAPTER, flywheel housing	830360	1	1	-	-
D-28	SHAFT, damper	25-M-5	1	1	-	-
* D-29	GASKET, adapter	7-M-8	-	-	1	1
* D-30	SEAL, adapter	15-M-36	-	-	1	1
* D-31	ADAPTER, pivot housing	830333	-	-	1	1
* D-32	BOLT, hex, self-locking	500578-10	-	-	6	6
* D-33	STUD, adapter	330426-7	-	-	4	4
* D-34	SPLINE, coupler	12-M-6	-	-	1	1
* D-35	NUT, adapter mounting	500373-4	-	-	4	4
* D-36	KIT, adapter (Includes Items D-30, D-31 & D-33)	810140X	-	-	1	1
D-37	BOLT, hex head	500399-16	4	4	-	-
D-38	LOCKWASHER	500357-12	4	4	-	-
D-39	KIT, adapter (Includes D-27, D-37, & D-38)	810226X	1	1	-	-
D-40	BOOT SHROUD (shielded)	830406	1	1	1	1
CENTER YOKE JOINT ASSEMBLY (Includes Items E-1 thru E-9)						
E- 1	CENTER YOKE JOINT ASSY.	209404	1	1	1	1
	(Includes Items E-2 thru E-9 except E-4)					
E- 2	SHAFT, yoke	2-82-871	1	1	1	1
E- 3	YOKE, center	2-26-257	1	1	1	1
E- 4	YOKE, end	2-4-3161	1	1	1	1
E- 5	KIT, universal joint (Includes Items E-6 thru E-9)	5-153X	2	2	2	2
E- 6	CROSS, journal (N. S. S.)	2-5-386X	2	2	2	2
E- 7	BEARING ASSEMBLY (N. S. S.)	2-6-208X	8	8	8	8
E- 8	GASKET (N. S. S.)	2-86-89	8	8	8	8
E- 9	RING, snap (N. S. S.)	2-7-29	8	8	8	8

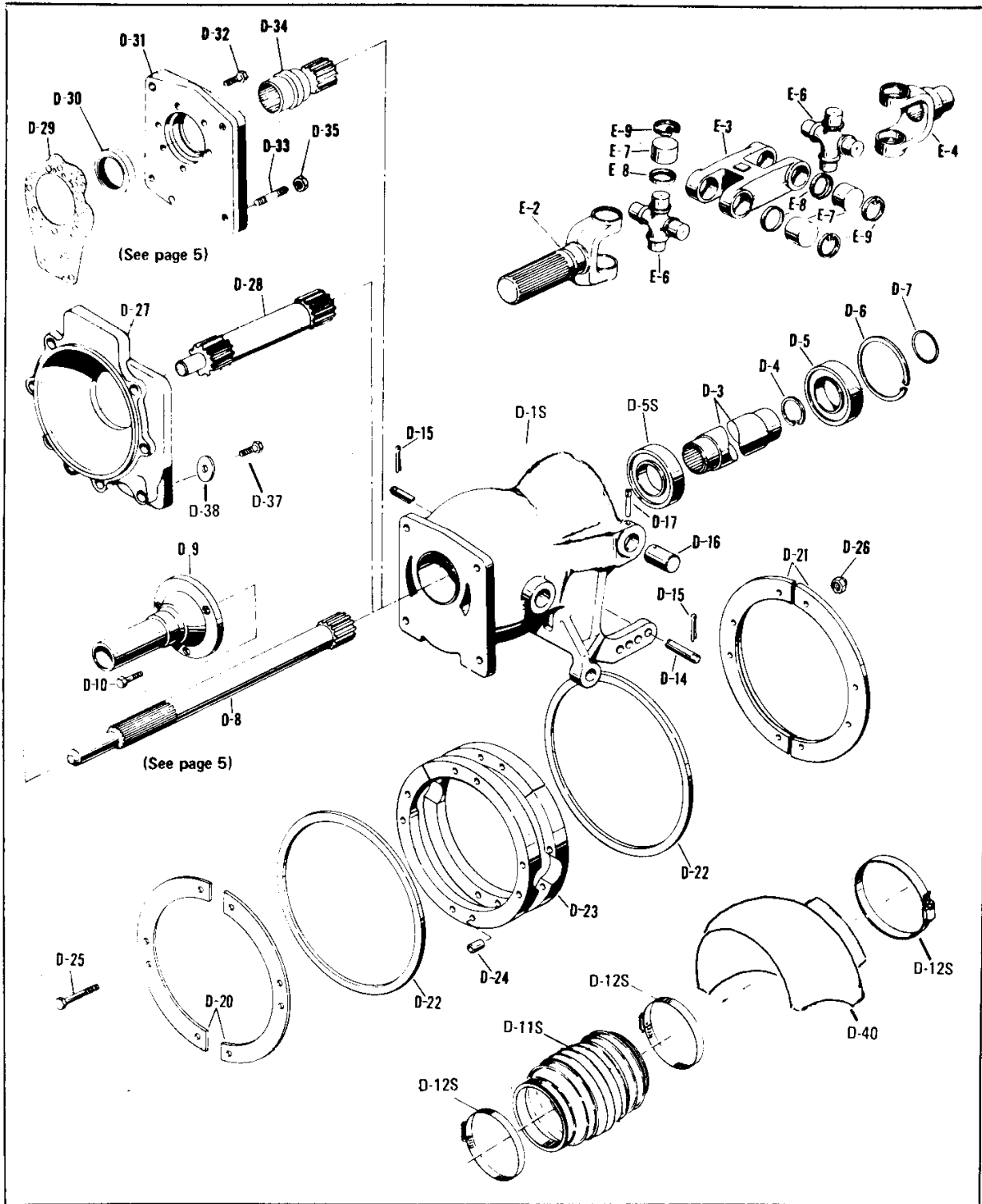
*Used with Warner Drive AS30-72CR and AS30-72C only **ADAPTER KIT 810161X**
N. S. S. - Not Sold Separately.

**PIVOT HOUSING GROUP
CENTER YOKE JOINT ASSEMBLY**
(OPEN BOOT FORM)



PIVOT HOUSING GROUP CENTER YOKE JOINT ASSEMBLY

(SHIELDED BOOT FORM)



**(C) PIVOT SUPPORT YOKE GROUP
INTERLOCK GROUP • SHOCK ABSORBER GROUP
INTERLOCK SHIFT LEVER GROUP • UPPER CASE EXT. PARTS GROUP**

REF. NO.	PART NAME	PART NO.	QTY. FOR MODEL			
			60	80	81	91
PIVOT SUPPORT YOKE GROUP (Includes Items F-1 thru F-11)						
F-1a	YOKE & BUSHINGS (For Service) (Includes Items F-1, F-3, F-9, F-10, & F-11)	810191X	1	1	1	1
F-1	YOKE, pivot support (use 18-M-8-1 for Lift II)	18-M-8	1	1	1	1
F-2	KIT, pivot support yoke (Includes Items F-3 thru F-6)	810033X	1	1	1	1
F-3	BUSHING, pivot pin	16-M-1	2	2	2	2
F-4	BEARING, pivot pin	550131	2	2	2	2
F-5	SEAL, pivot pin oil	15-M-2	2	2	2	2
F-6	PIN, yoke pivot	11-M-1	1	1	1	1
F-7	WASHER, pivot pin (upper)	830040	1	1	1	1
F-8	WASHER, pivot pin (lower)	830009	1	1	1	1
F-9	PIN, stop	830369	1	1	1	1
*F-10	ANODE, support yoke	830130	1	1	1	1
*F-11	SCREW, support yoke anode	830139	2	2	2	2
INTERLOCK GROUP (Includes Items G-1 thru G-20)						
G-1	INTERLOCK	10-M-11	1	1	1	1
G-2	SHAFT, interlock lever	11-M-8	1	1	1	1
G-3	PIN, interlock coil	11-M-27	1	1	1	1
G-4a	KIT, forward latch (Includes Items G-4 thru G-15 and F-9)	810235X	1	1	1	1
G-4	BODY, forward latch	10-M-23	1	1	1	1
G-5	CATCH, forward latch	10-M-25	1	1	1	1
G-6	PIN, pivot	11-M-33	1	1	1	1
G-7	PIN, cotter	830219	2	2	2	2
G-8	SCREW, cap	830362	2	2	2	2
G-9	SPRING, tension	13-M-9	2	2	2	2
G-10	NUT, retaining	830363	2	2	2	2
G-11	NUT, lock	830365	2	2	2	2
G-12	PIN, pivot	11-M-34	1	1	1	1
G-13	PIN, cotter	830368	2	2	2	2
G-14	SCREW, cap	830370	2	2	2	2
G-15	LEVER, actuating (used for Lift I)	10-M-28	1	1	1	1
G-15a	LEVER, actuating (used for Lift II)	10-M-28-1	1	1	1	1
*G-16a	KIT, reverse latch (Includes Items G-12, G-13, & Items G-16 thru G-18)	810233X	1	1	1	1
G-16	LATCH, reverse	10-M-27	1	1	1	1
G-17	SPRING, reverse latch	13-M-10	3	3	3	3
G-18	SCREW, thread forming	830474	2	2	2	2
G-19	PLATE, water deflector	830367	1	1	1	1
G-20	SCREW, drive	830133	4	4	4	4
G-21	BUSHING, interlock lever	16-M-4	1	1	1	1

* Can be purchased as Kit 810071X (includes both anodes for Models 60, 80, & 81).

* Can be purchased as Kit 810234X (includes all anodes for Model 91).

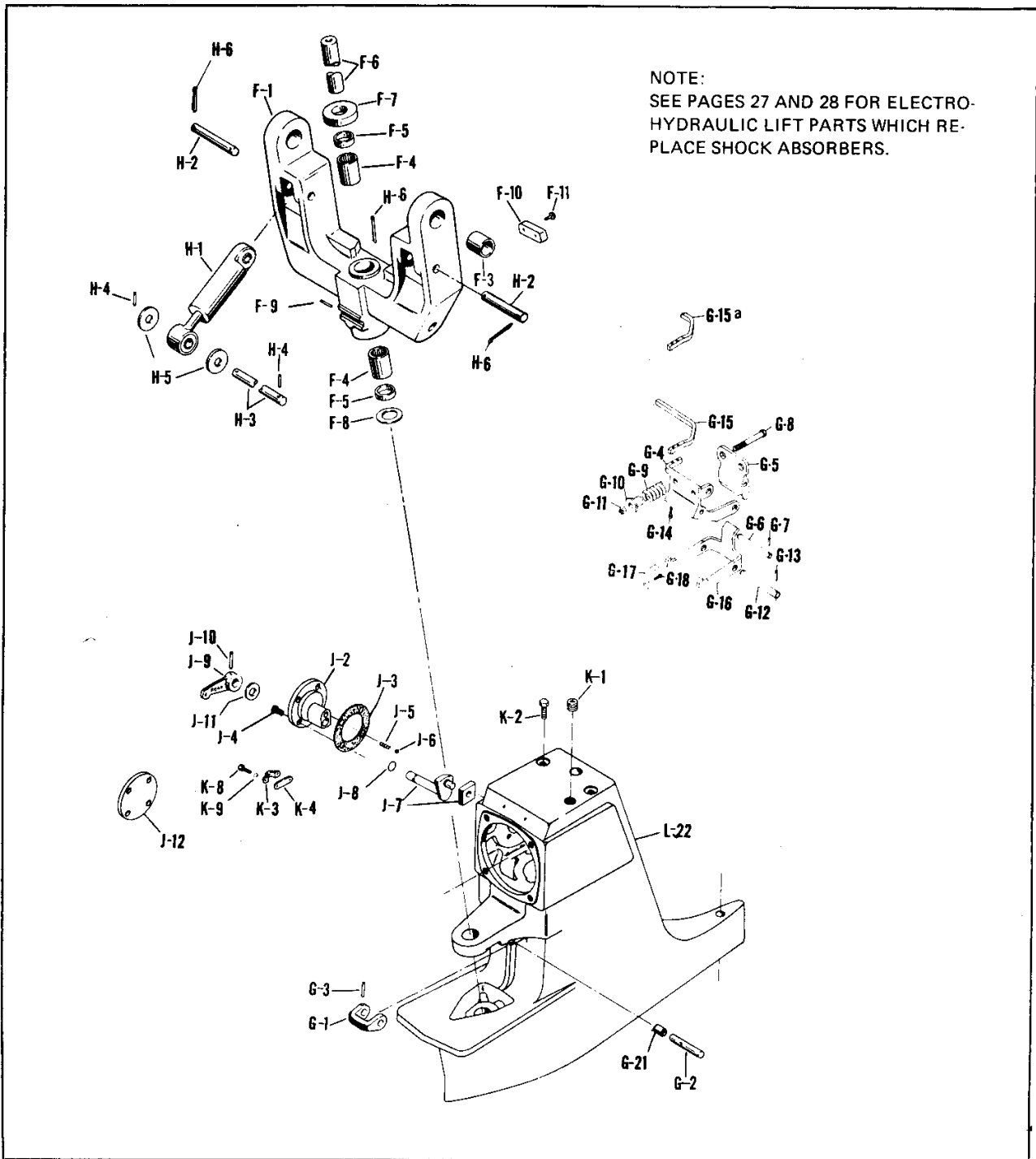
** Reference Kit 810233-1X on page 34.

**PIVOT SUPPORT YOKE GROUP
INTERLOCK GROUP • SHOCK ABSORBER GROUP
INTERLOCK SHIFT LEVER GROUP • UPPER CASE EXT. PARTS GROUP**

REF. NO.	PART NAME	PART NO.	QTY. FOR MODEL			
			60	80	81	91
SHOCK ABSORBER GROUP (Includes Items H-1 thru H-6)						
		810039X	1	1	1	1
H-1	ABSORBER, shock	810016X	2	2	2	2
H-2	PIN, shock (upper)	11-M-10	2	2	2	2
H-3	PIN, shock (lower)	11-M-9	1	1	1	1
H-4	LOCKPIN, cotter, shock pin (lower)	830299	2	2	2	2
H-5	WASHER, shock pin (lower)	830031	4	4	4	4
H-6	LOCKPIN, cotter, shock pin (upper)	830017	4	4	4	4
INTERLOCK SHIFT LEVER GROUP (Includes Items J-2 thru J-12)						
	LEVER SUB-ASSY., interlock shift. (All items except J-3, J-4, J-12)	810240X	1	1	-	-
J-2	CAP, interlock shift lever	810210X	1	1	-	-
J-3	GASKET, interlock shift lever cap	7-M-9	1	1	1	1
J-4	SCREW, interlock shift lever cap	830022	4	4	4	4
J-5	SPRING, interlock poppet ball	13-M-3	1	1	-	-
J-6	BALL, interlock poppet	50-80-3	1	1	-	-
* J-7	ARM & SHOE SUB-ASSY., interlock shift lever	810036X	1	1	-	-
J-8	RING, interlock shift lever arm "O"	15-M-7	1	1	-	-
* J-9	LEVER, interlock shift	10-M-15	1	1	-	-
* J-10	PIN, interlock shift lever arm roll	11-M-27	1	1	-	-
J-11	WASHER, interlock shift lever	830008	1	1	-	-
J-12	CAP, solid cover	6-M-19	-	-	1	1
UPPER CASE EXTERNAL PARTS GROUP (Includes Items K-1 thru K-9)						
K-1	PLUG, upper case filler	830086	1	1	1	1
K-2	PLUG, threaded	830361	1	1	1	1
K-3	CLAMP, cable	830113	1	1	1	1
K-4	SHIM, cable clamp	830114	1	1	1	1
K-5	TERMINAL, cable pivot (See Fig., Page 14)	830115	1	1	1	1
K-6	WASHER, flat (See Fig., Page 14)	830116	1	1	1	1
K-7	PIN, cotter (See Fig., Page 14)	830117	1	1	1	1
K-8	SCREW, machine	830118	2	2	2	2
K-9	LOCKWASHER, internal tooth	830119	2	2	2	2

* Effective mid 1976 the pin was enlarged to 1/4 inch diameter and designated 11-M-27-1. Mating levers and subassemblies similarly carry -1 part number designations.

**PIVOT SUPPORT YOKE GROUP
 INTERLOCK GROUP • SHOCK ABSORBER GROUP
 INTERLOCK SHIFT LEVER GROUP • UPPER CASE EXT. PARTS GROUP**



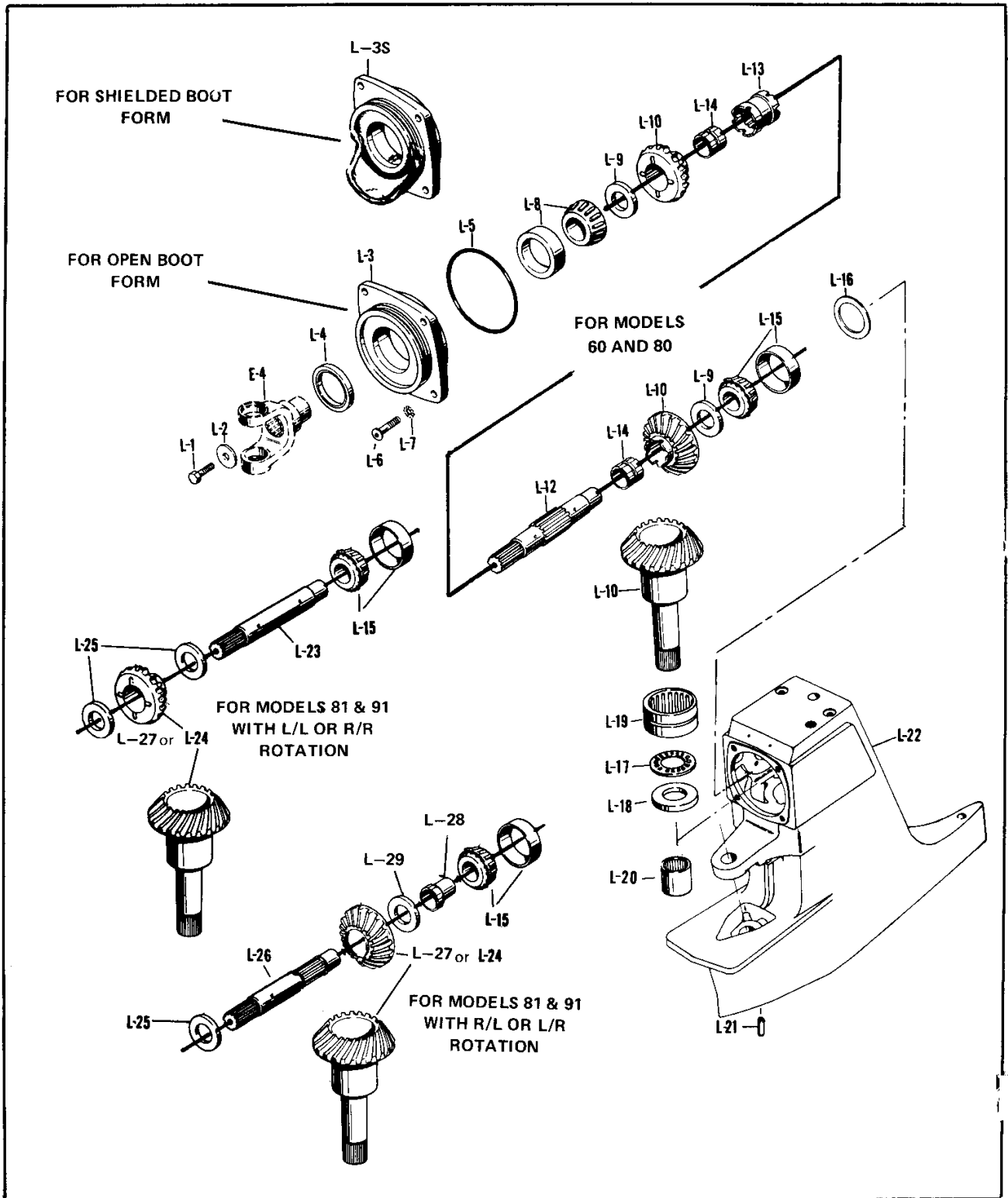
(D) UPPER CASE ASSEMBLY

REF. NO.	PART NAME	PART NO.	QTY. FOR MODEL			
			60	80	81	91
UPPER CASE ASSEMBLY (Includes L-1 thru L-25) See Page 21 for Complete Upper Case Assembly						
L-1	SCREW, input shaft retainer	500667-7	1	1	1	1
L-2	WASHER, input shaft retainer screw	830049	1	1	1	1
L-3	CAP, input shaft front bearing (Open Boot)	21-M-11	1	1	1	1
L-3S	CAP, input shaft front bearing (Shielded Boot)	21-M-17	1	1	1	1
L-4	SEAL, input shaft front bearing oil	15-M-1	1	1	1	1
L-5	RING, input shaft front bearing cap "O"	15-M-4	1	1	1	1
L-6	SCREW, input shaft front bearing cap	830343	4	4	4	4
L-7	WASHER, starlock	830144	4	4	4	4
L-8	BEARING SUB-ASSY., input shaft front	810037X	1	1	1	1
L-9	SPACER, input shaft bearing cone (See Table One, Page 29)		2	2	-	-
L-10	STEM & BEVEL GEAR ASSY.					
	a. Ratio: 1.32 to 1.0	810005X	1	1	-	-
	b. Ratio: 1.60 to 1.0	810211X	1	1	-	-
L-11	SHAFT ASSY., input pinion (Includes Items L-12 thru L-13)	810022-1X	1	1	-	-
L-12	SHAFT, input pinion	3-M-2	1	1	-	-
L-13	COLLAR, input pinion shaft clutch	23-M-1	1	1	-	-
L-14	BUSHING, part of clutch gear assembly L-10	830319	2	2	-	-
L-15	BEARING, SUB-ASSY., input shaft rear	810038X	1	1	1	1
L-16	BAFFLE, input shaft oil	830052	1	1	-	-
L-17	BEARING, upper stem gear thrust	550658	1	1	1	1
L-18	RACE, stem gear thrust bearing (See Table Two, Page 29)	8-M-1-()	1	1	1	1
L-19	BEARING, upper stem gear roller (large)	550656	1	1	1	1
L-20	BEARING, upper stem gear roller (small)	550657	1	1	1	1
L-21	PIN, upper and lower case, dowel	500601-14	1	1	1	1
L-22	CASE, upper (Built in 2" Extension)	1-M-31	1	1	1	1
	CASE, upper (Without 2" Extension)	1-M-29	1	1	1	1
L-23	SHAFT, input pinion (L/L or R/R Rotation)	3-M-1	-	-	1	1
** L-24	STEM & BEVEL GEAR ASSY. (L/L or R/L Rotation)*					
	a. Ratio: 1.00 to 1	810001X	-	-	1	-
	b. Ratio: 1.32 to 1	810002X	-	-	1	-
	c. Ratio: 1.60 to 1	810004X	-	-	1	-
	d. Ratio: 1.55 to 1	810001X	-	-	-	1
	e. Ratio: 1.70 to 1	810205X	-	-	-	1
	f. Ratio: 1.85 to 1	810001X	-	-	-	1
	g. Ratio: 2.00 to 1	810205X	-	-	-	1
L-25	SPACER, input shaft bearing cone (See Table Three, Page 30)	830085-()	-	-	2	2
L-26	SHAFT, input pinion (L/R or R/L Rotation)	3-M-3	-	-	1	1
** L-27	STEM & BEVEL GEAR ASSY. (L/R or R/R Rotation)*					
	a. Ratio: 1.00 to 1	810277X	-	-	1	-
	b. Ratio: 1.32 to 1	810278X	-	-	1	-
	c. Ratio: 1.60 to 1	810279X	-	-	1	-
	d. Ratio: 1.55 to 1	810277X	-	-	-	1
	e. Ratio: 1.70 to 1	810280X	-	-	-	1
	f. Ratio: 1.85 to 1	810277X	-	-	-	1
	g. Ratio: 2.00 to 1	810280X	-	-	-	1
L-28	BUSHING, pinion shaft	830399	-	-	1	1
L-29	SPACER, input shaft bearing cone (See Table Nine, Page 32)	830400	-	-	1	1

*See Page 12 for explanation of Rotation convention.

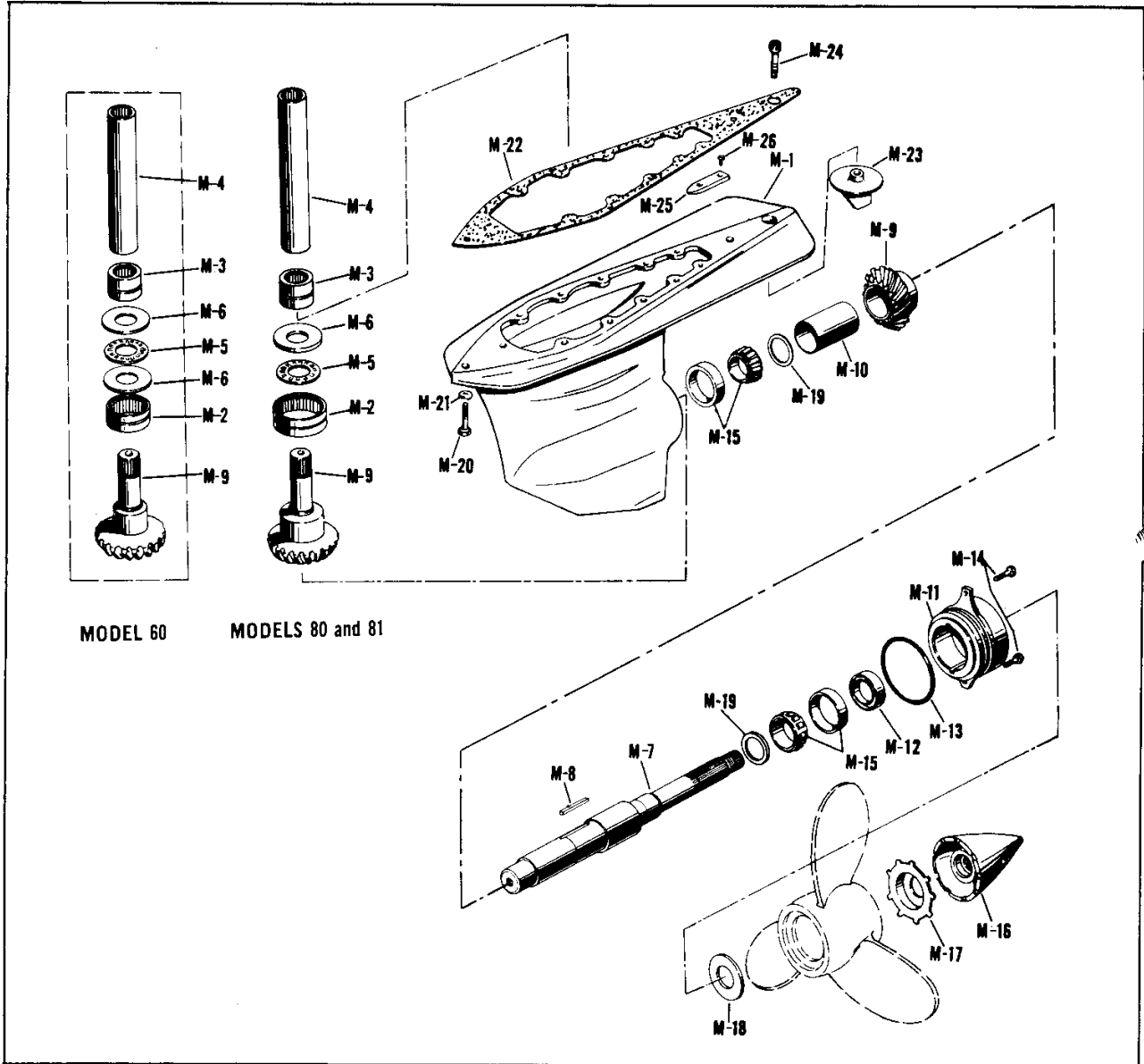
** See page 64 Service Manual 9761G for complete gear information.

UPPER CASE ASSEMBLY



LOWER CASE ASSEMBLY

MODELS 60, 80 and 81 ONLY



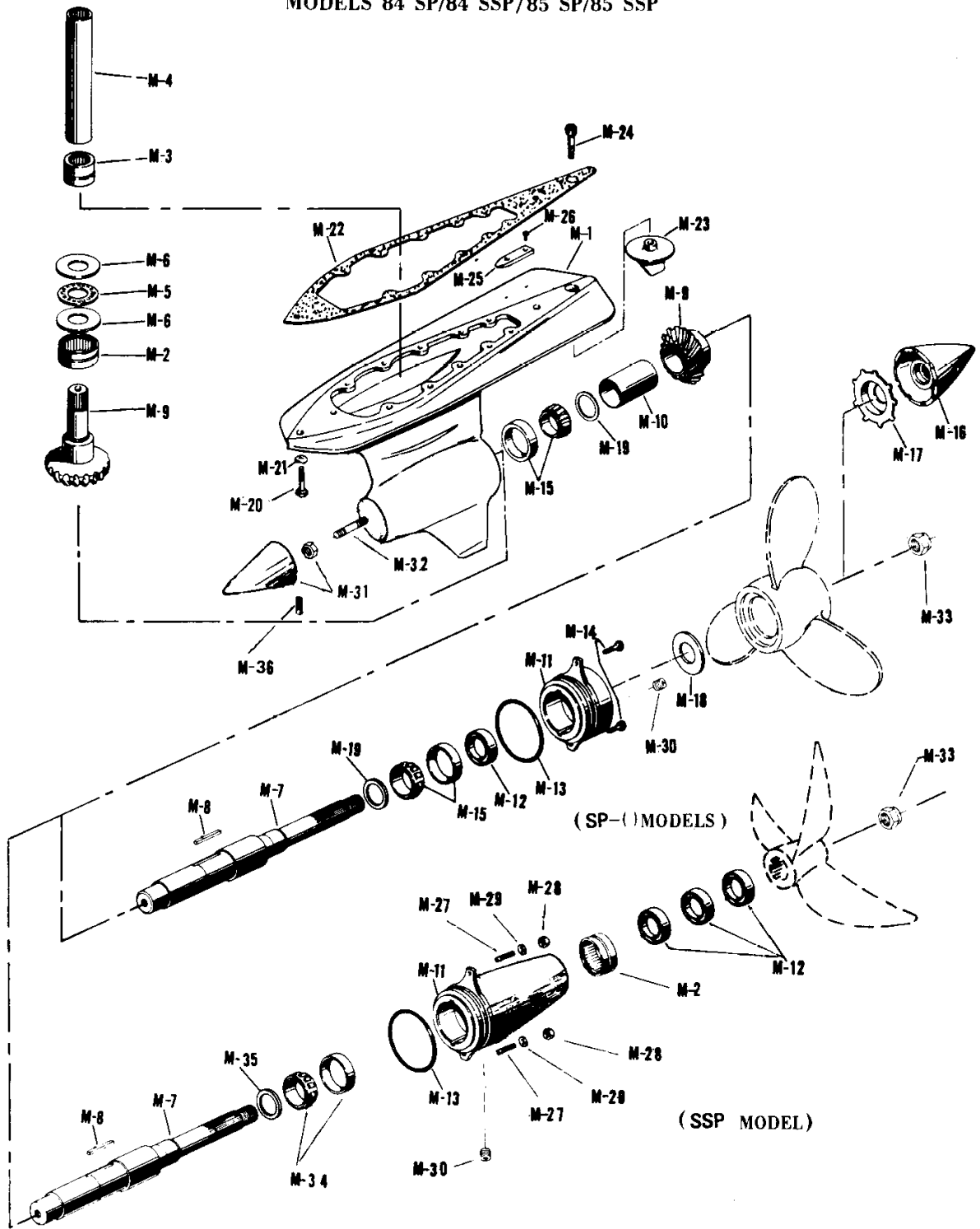
LOWER CASE ASSEMBLY

MODELS 84 SP/84 SSP/85 SP/85 SSP

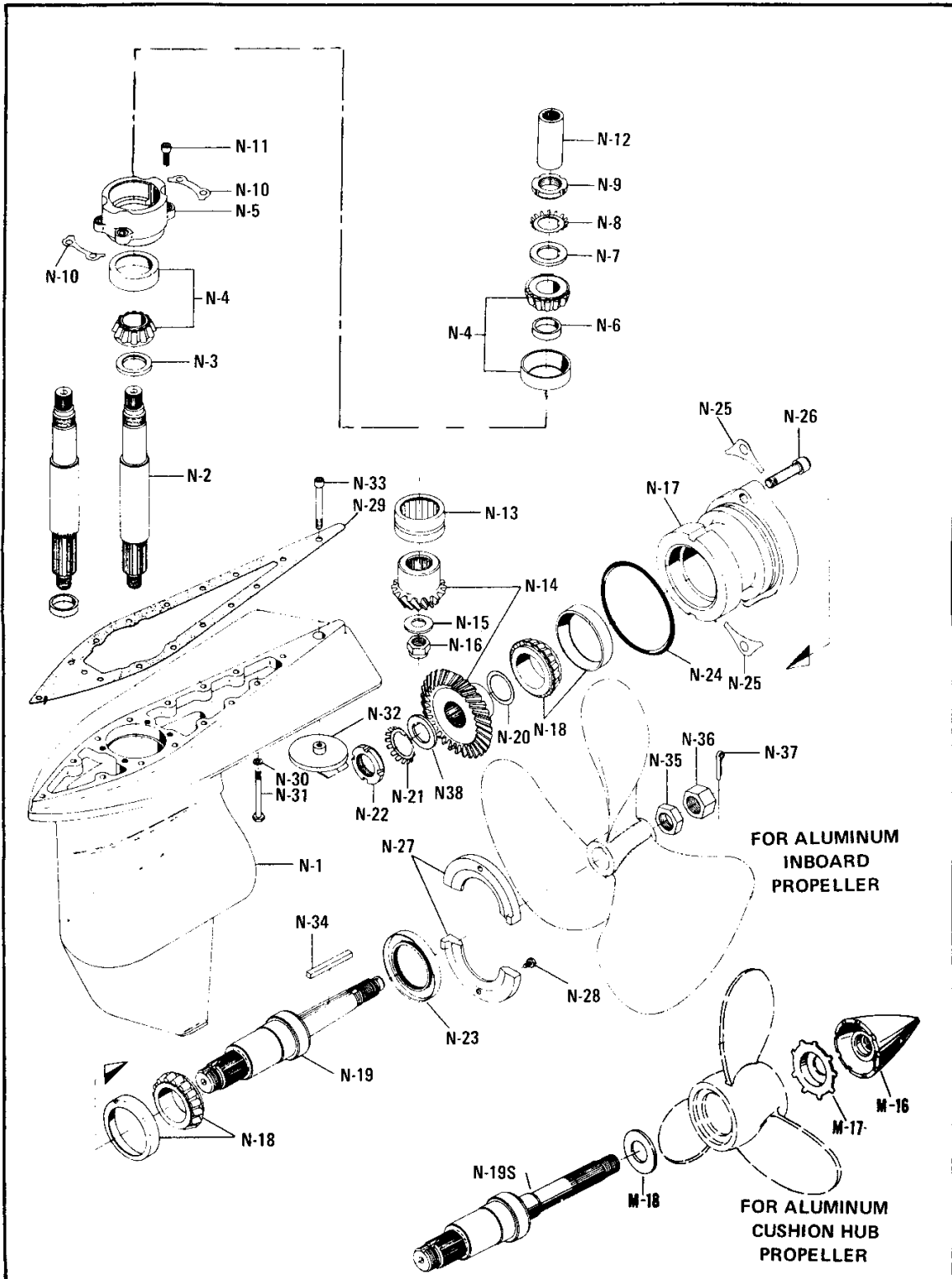
REF No.	PART NAME	SP - ()		SSP		
		PART NO.	QTY	PART NO.	PART NO.	QTY
M-1	CASE, lower	1-M-3-2	1	1-M-3-3	1-M-3-4	1
M-2	BEARING, vertical stem gear roller (large)	830500	1	bore 4 7/16 830500	bore 4 5/16 830500	2
M-3	BEARING, vertical stem gear roller (small)	550657	1	550657	550657	1
M-4	COUPLING	12-M-1-()	1	12-M-1-()	12-M-1-()	1
		Refer to Table of Vertical Couplers SERVICE MANUAL Pub. No. 9761G page 65				
M-5	BEARING, stem gear thrust	550658	1	550658	550658	1
M-6	RACE, stem gear thrust brg	8-M-1-()	2	8-M-1-()	8-M-1-()	2
M-7	SHAFT, output SP-0	9-M-4	1			
	SP-1	9-M-4-1	1			
	SP-2	9-M-4-2	1			
	SSP			9-M-4-3	9-M-4-3	1
M-8	KEY, output shaft	830193	1	830193	830193	1
M-9	GEAR ASSEMBLY	Refer to Master Gear Set Reference Table SERVICE MANUAL Pub No. 9761G page 64				
M-10	SLEEVE, output shaft	830192	1	830192	830192	1
M-11	CAP, output brg	21-M-3 SP	1	21-M-3-1	21-M-3-2	1
M-12	SEAL, output shaft oil	15-M-3	1	830503	830503	3
M-13	O RING, brg cap	15-M-5	1	15-M-5	15-M-5-1	1
M-14	SCREW, brg cap	830023	2	830509		2
M-15	BEARING, cone	550456	2	550456	550456	1
	BEARING, cup	550457	2	550457	550457	1
M-16	CONENUT, prop cone (option)	830315	1			
M-17	LOCKWASHER, prop nut (option)	830001	1			
M-18	HUB SUPPORT, prop SP-0	830004	1			
	SP-1	830004-1	1			
M-19	SPACER, shaft brg	830084-()	2	830084-()	830084-()	1
M-20	SCREW, upper/lower case	830021	14	830021	830021	14
M-21	WASHER, upper/lower case	830020	14	830020	830020	14
M-22	GASKET, upper/lower case	7-M-2	1	7-M-2	7-M-2	1
M-23	TAB, trim	830134	1	830134-1	830134-1	1
M-24	SCREW, trim tab (Type C Upper)	830070	1	830070	830070	1
M-25	ANODE, cavitation plate	830136	1	830136	830136	1
M-26	SCREW, anode	830139	2	830139	830139	2
M-27	STUD, brg cap				830519	2
M-28	NUT, stud				830520	2
M-29	WASHER, stud				830521	2
M-30	OIL PLUG	830510-1	1	830510	830510	1
M-31	NOSE CONE, (N.S.S. with NUT)	830497-2	1	830497-2	830497-2	1
	NUT, (N.S.S. with NOSE CONE)	830508	1	830508	830508	1
M-32	STUD, nose cone	830507	1	830507	830507	1
M-33	NUT, propeller SP-0	830498	1			
	SP-1 & SSP	830505	1	830505	830505	1
	SP-2	830506	1			
M-34	BEARING, cone			830502	830502	1
	BEARING, cup			830501	830501	1
M-35	SPACER, brg			830504-()	830504-()	1
M-36	SET SCR, nose cone	830517	1	830517	830517	1

LOWER CASE ASSEMBLY

MODELS 84 SP/84 SSP/85 SP/85 SSP



LOWER CASE ASSEMBLY MODEL 91 ONLY



(F) HYDRAULIC LIFT GROUP I

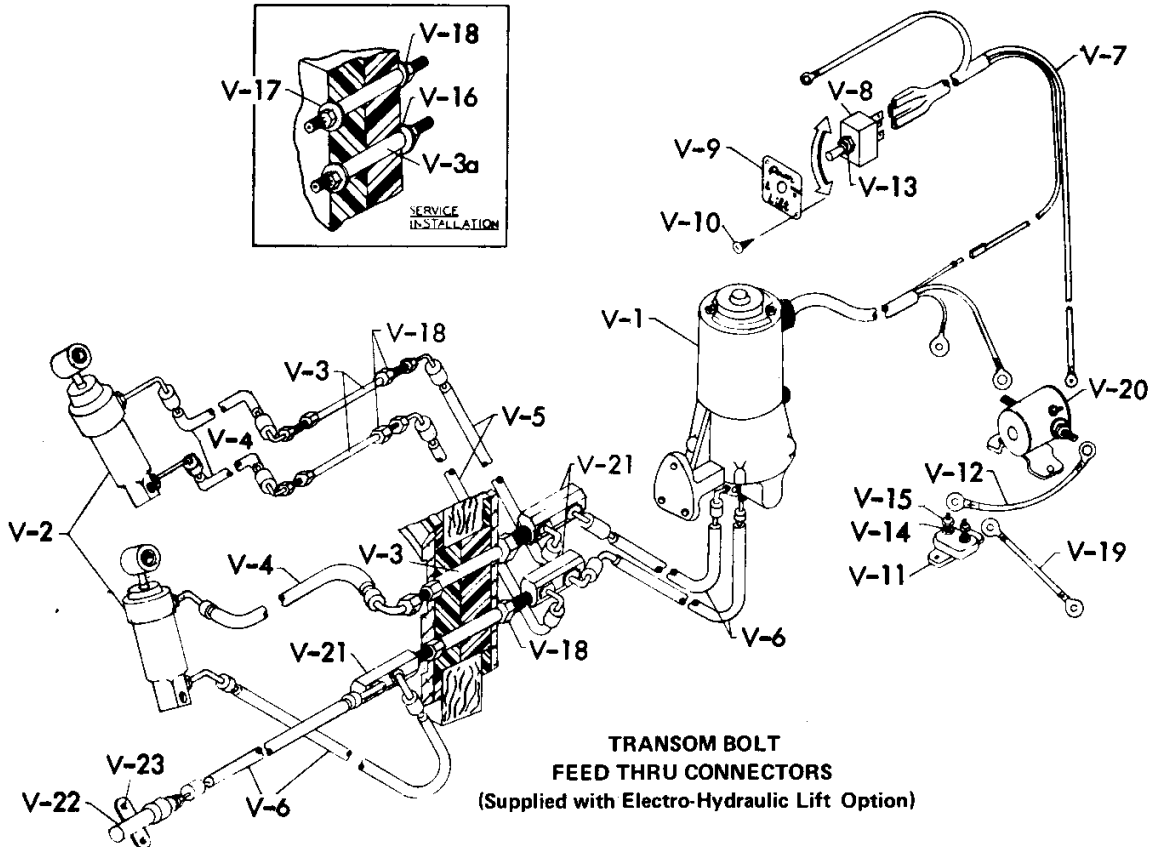
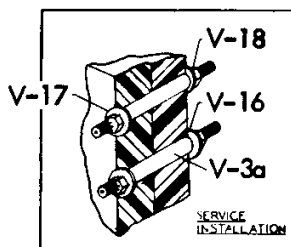
REF. NO.	PART NAME	PART NO.	QTY.
	KIT, heavy duty hydraulic lift (conversion) (consists of all items listed below except as marked *)	810238X	1
	KIT, heavy duty hydraulic lift (service) (consists of all items listed below except as marked **)	810218X	1
V-1	PUMP, hydraulic lift	830321	1
V-2	CYLINDER, hydraulic lift	830157	2
*V-3	CONNECTOR, hydraulic hose (transom ring)	830158	4
**V-3a	CONNECTOR, hydraulic hose (drilled holes)	830167	4
V-4	HOSE, hydraulic (return)	830159	3
V-5	HOSE, hydraulic (cross-overs)	830161	2
V-6	HOSE, hydraulic (feed)	830382	4
V-7	HARNESS, wire	830322	1
V-8	SWITCH, hydraulic lift control	830163	1
V-9	PLATE, control switch cover	830352	1
V-10	SCREW, mounting plate	830353	2
V-11	BREAKER, circuit	830164	1
V-12	WIRE, single cable lead	830323-1	1
V-13	NUT, control switch mounting	830166	1
V-14	WASHER, lock (circuit breaker)	500357-7	2
V-15	NUT, circuit breaker	500377-6	2
*V-16	WASHER, flat	830026	4
**V-17	WASHER, rubber-sealing	830027	4
V-18	NUT, huglock	830081	4
V-19	SINGLE CABLE, lead wire (long)	830323	1
V-20	SOLENOID	830261	1
V-21	DOUBLE ELBOW	830383	3
V-22	PLUNGER, forward latch release	830385	1
V-23	SCREW, release plunger	830364	2

* Some lifts are installed through transom mounting ring bolts. Use this part for those models.

** Use this part only when separate transom holes were drilled to install hydraulic lift lines.

HYDRAULIC LIFT GROUP I

**SEPARATE TRANSOM
FEED THRU CONNECTORS**
(Supplied with Shock Absorber Retrofit Kit)



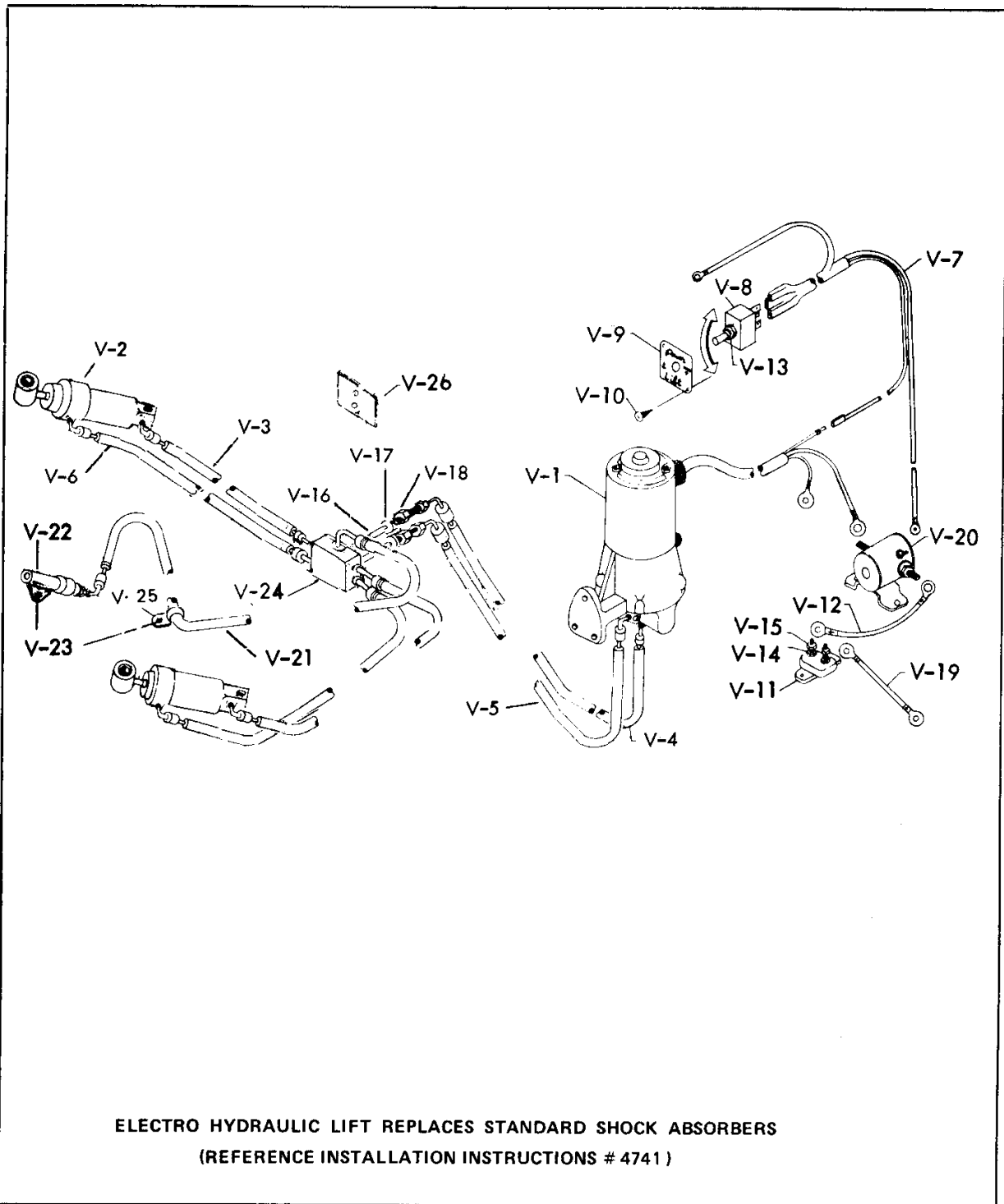
**TRANSOM BOLT
FEED THRU CONNECTORS**
(Supplied with Electro-Hydraulic Lift Option)

ELECTRO HYDRAULIC LIFT REPLACES STANDARD SHOCK ABSORBERS
(REFERENCE INSTALLATION INSTRUCTIONS #11729)

HYDRAULIC LIFT GROUP II

REF. NO.	PART NAME	PART NO.	QTY.
	KIT, heavy duty hydraulic lift (consists of all items listed below)	810244X	1
V-1	PUMP, hydraulic lift	830321	1
V-2	CYLINDER, hydraulic lift	830157	2
V-3	HOSE, hydraulic (feed)	830476	2
V-4	HOSE, hydraulic	830160	1
V-5	HOSE, hydraulic (return)	830161	1
V-6	HOSE, hydraulic	830382	2
V-7	HARNESS, wire	830322	1
V-8	SWITCH, hydraulic lift control	830163	1
V-9	PLATE, control switch cover	830352	1
V-10	SCREW, mounting plate	830353	2
V-11	BREAKER, circuit	830164	1
V-12	WIRE, single cable lead	830323-1	1
V-13	NUT, control switch mounting	830166	1
V-14	WASHER, lock (circuit breaker)	500357-7	2
V-15	NUT, circuit breaker	500377-6	2
V-16	CONNECTOR, hydraulic hose (transom)	830475	2
V-17	WASHER	830482	2
V-18	NUT	830481	2
V-19	SINGLE CABLE, lead wire (long)	830323	1
V-20	SOLENOID	830261	1
V-21	HOSE, hydraulic, release plunger	830477	1
V-22	PLUNGER, forward latch release	830483	1
V-23	SCREW	830364	2
V-24	MANIFOLD, hydraulic	830478	1
V-25	CLAMP, hydraulic hose	830479	1
V-26	GASKET	830480	1

HYDRAULIC LIFT GROUP 11



NOTE: Plunger 830483 is internally mounted on Yoke 18-M-8-1 to actuate Lever 10-M-28-1
(See page 18)